

METAL EARTH™

3D LASER CUT MODELS

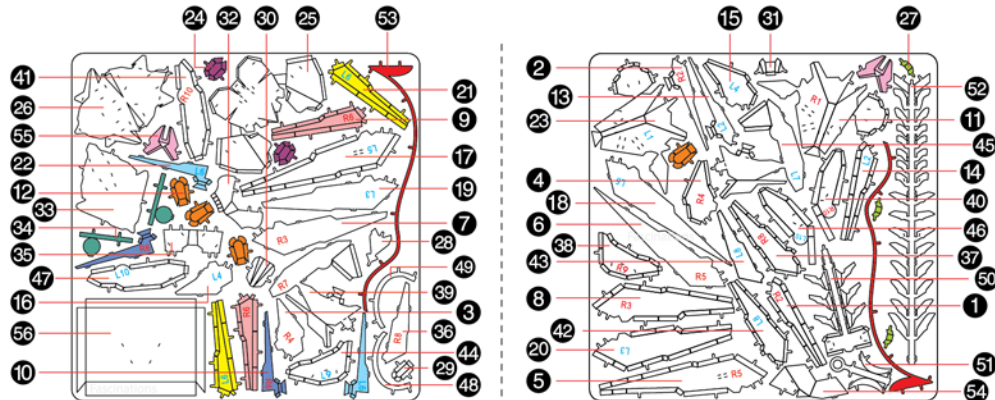
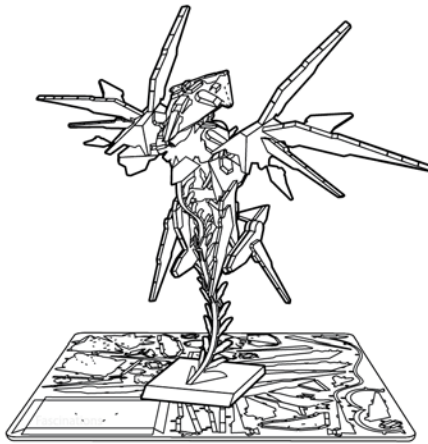


It is highly recommended that you visit www.fascinations.com/metalearth360/Halo5Guardians to see the completed models before assembling your own.

Nós recomendamos que você visite www.fascinations.com/metalearth360/Halo5Guardians para ver os modelos completos antes de construir o seu.

É recomendado que você visite www.fascinations.com/metalearth360/Halo5Guardians para ver os modelos completos antes de montar o seu.

Se recomienda visitar www.fascinations.com/metalearth360/Halo5Guardians par ver los modelos completos antes de montar.

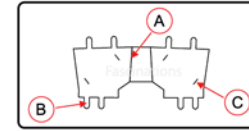


! In order to avoid possible injury from sharp edges, please carefully discard the metal sheet after parts have been removed.

! Para evitar possíveis lesões nas bordas afiadas, descarte cuidadosamente a folha de metal depois das peças serem removidas.

! Afin d'éviter les blessures possibles pouvant être occasionnées par les rebords coupants, mettez au rebut avec précaution les feuilles de métal une fois les pièces retirées.

! Para evitar lesiones debido a bordes filosos, descarta cuidadosamente la hoja metálica una vez extraídas las piezas.

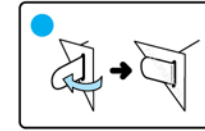


A. Fold lines can be seen as shown here
B. Insertion tabs are inserted and then folded
C. Insertion holes

A. As linhas de dobra são exibidas aqui
B. As abas de inserção são inseridas e depois dobradas
C. Locais de inserção

A. Les lignes de pliage sont illustrées ici
B. Les onglets d'insertion sont insérés, puis pliés
C. Fentes d'insertion

A. Las líneas de pliegue se pueden ver, tal como se muestra aquí
B. Las pestañas de inserción se insertan y se doblan
C. Agujeros de inserción

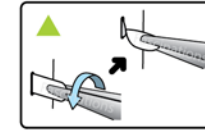


● Insert tab and bend 90 degrees for most visible areas
▲ Insert tab and twist 90 degrees is best in some areas to ensure a tight connection

● Inserir a aba e dobrar 90 graus para as áreas mais visíveis
▲ É recomendado inserir a aba e girar 90 graus em algumas áreas para garantir uma conexão segura

● Insérer l'onglet et plier à 90 degrés dans les zones les plus visibles
▲ Insérer l'onglet et plier à 90 degrés sera préférable dans certaines zones pour assurer une connexion étanche

● Insertar la pestaña y doblar 90 grados para las áreas más visibles
▲ Insertar la pestaña y doblar 90 grados es la mejor opción en algunas áreas para garantizar una conexión firme



Needle nose pliers are helpful for assembly

Um alicate de bico fino é útil para a montagem

Des pinces à becs pointus peuvent être utiles pour l'assemblage

Las pinzas son útiles para el montaje

NOTE SYMBOLS SÍMBOLOS DE NOTA

SYMBOLES DE NOTE SÍMBOLOS DE NOTA



Engraved side Lado com gravura
Côté gravé Lado grabado

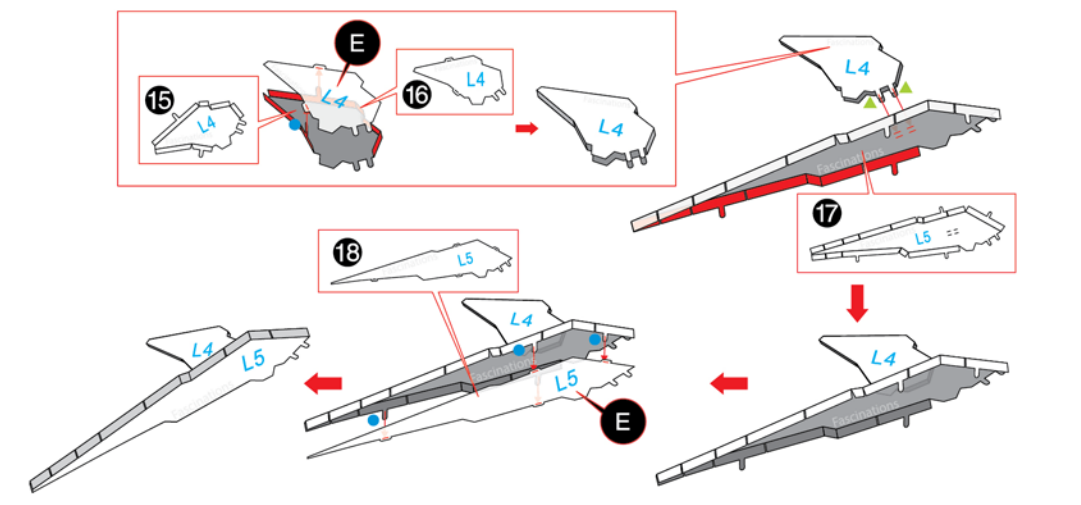
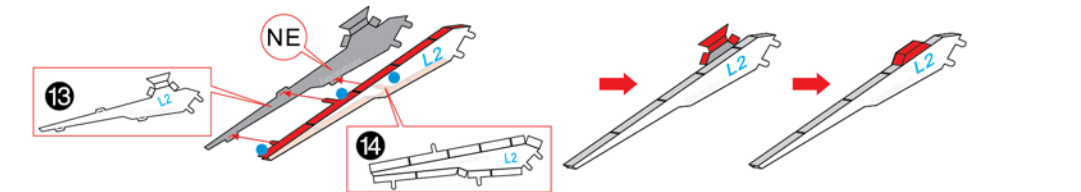
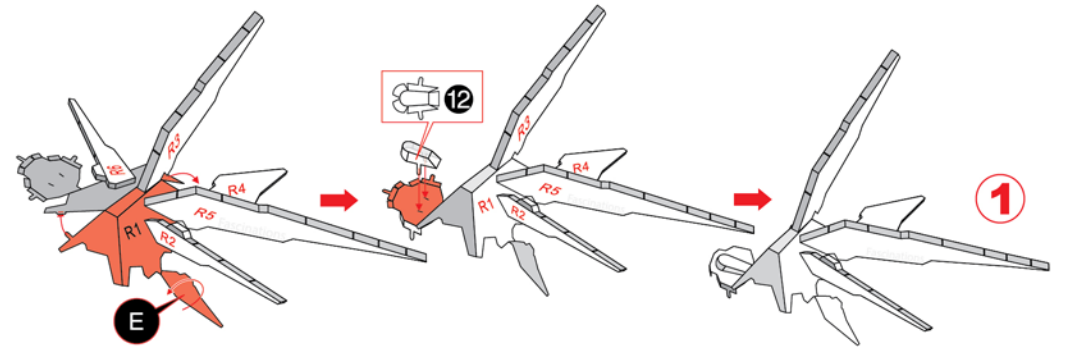
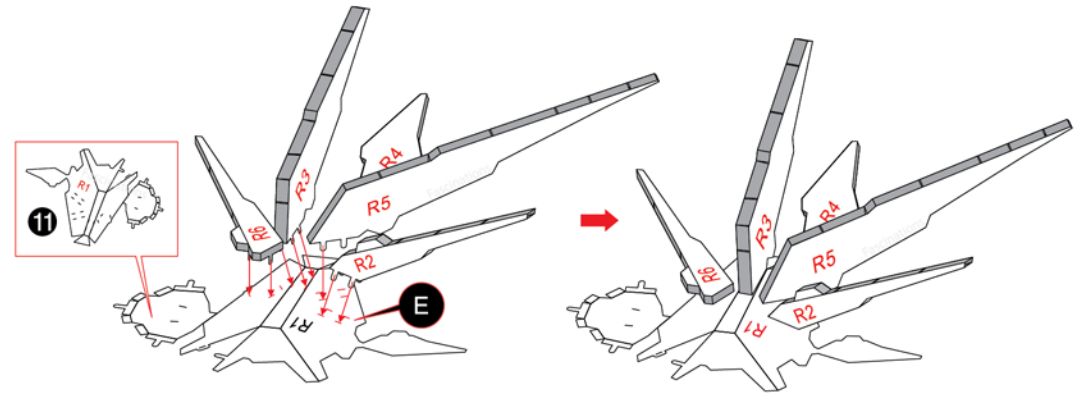
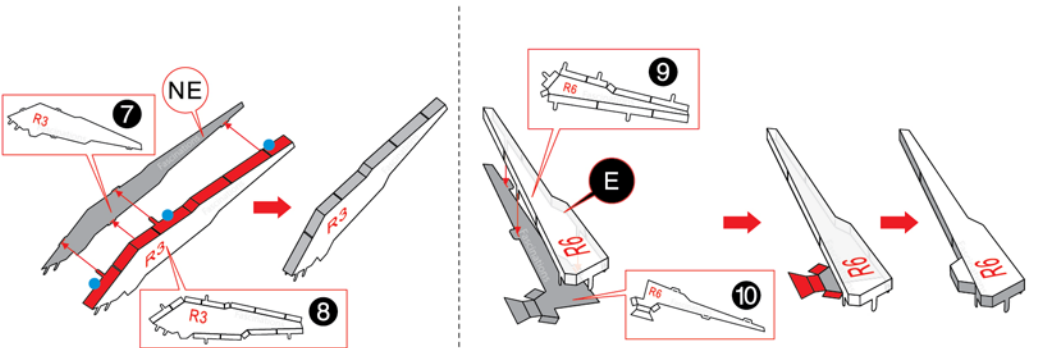
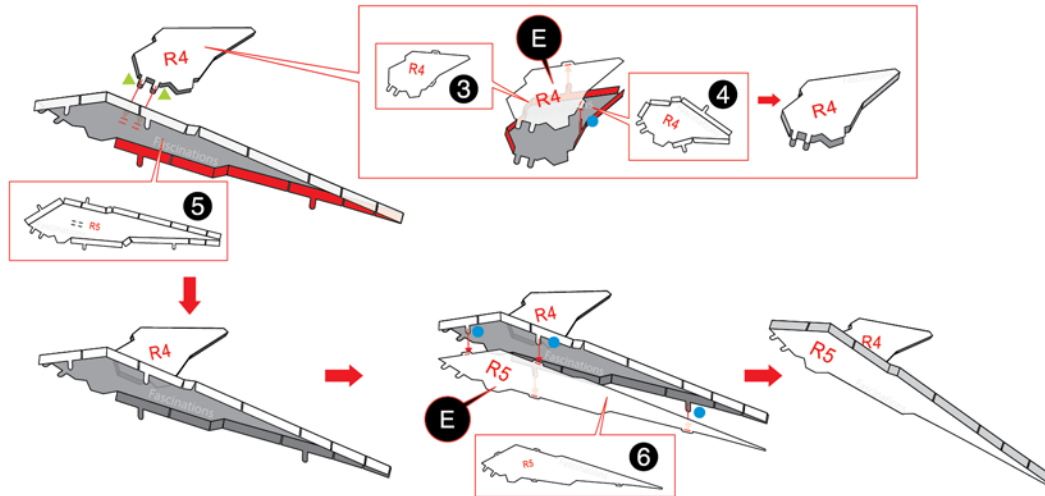
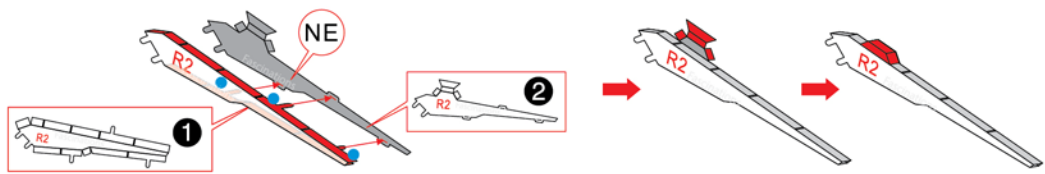


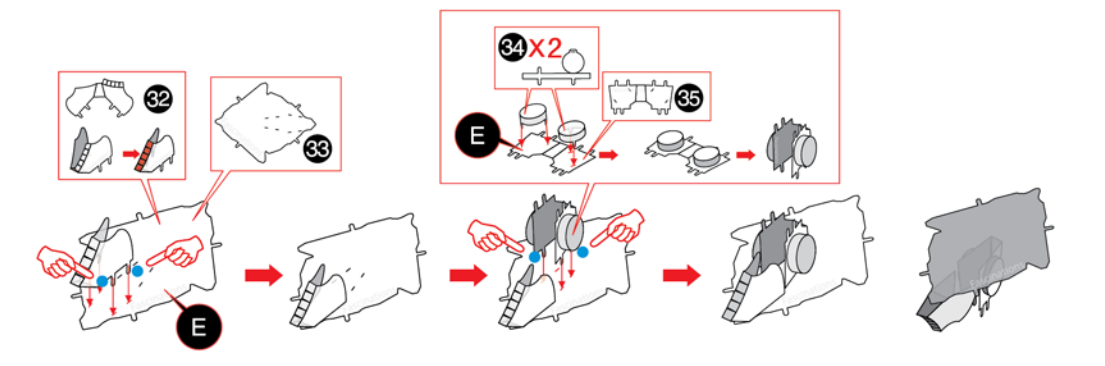
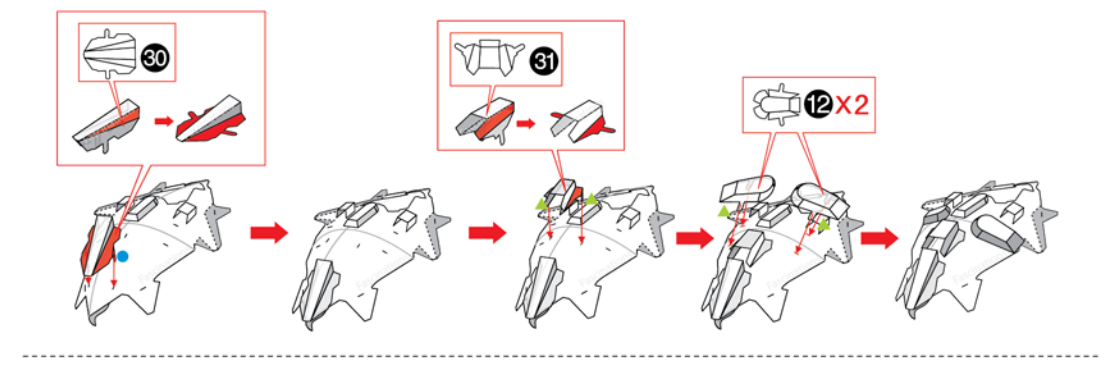
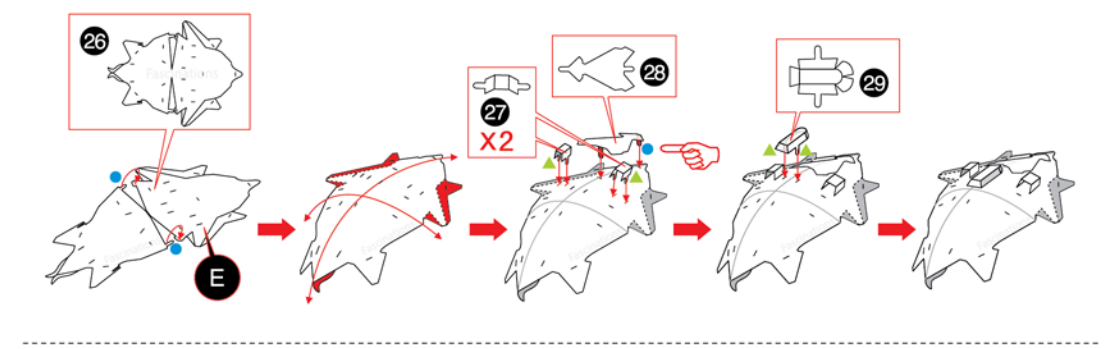
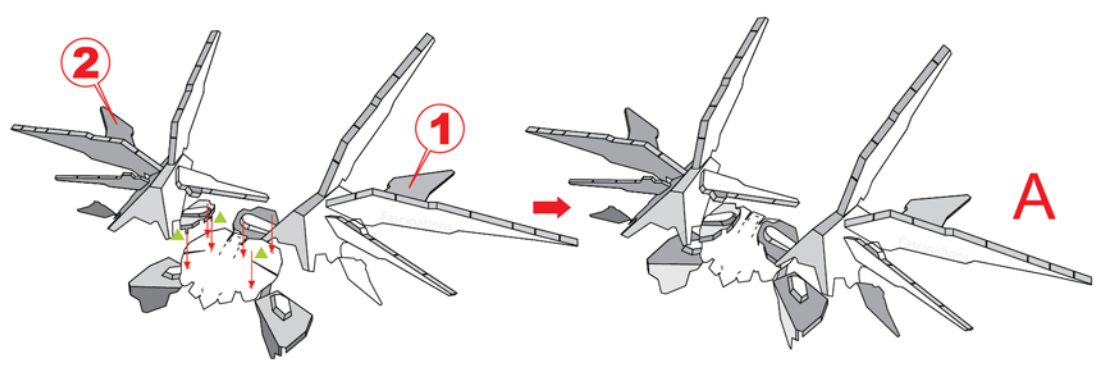
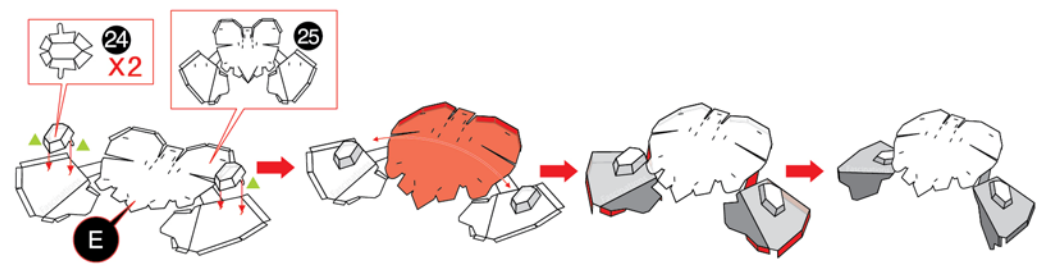
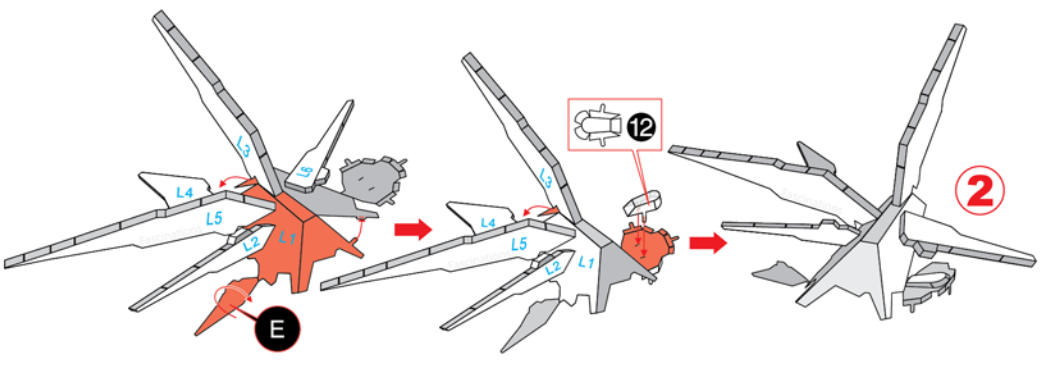
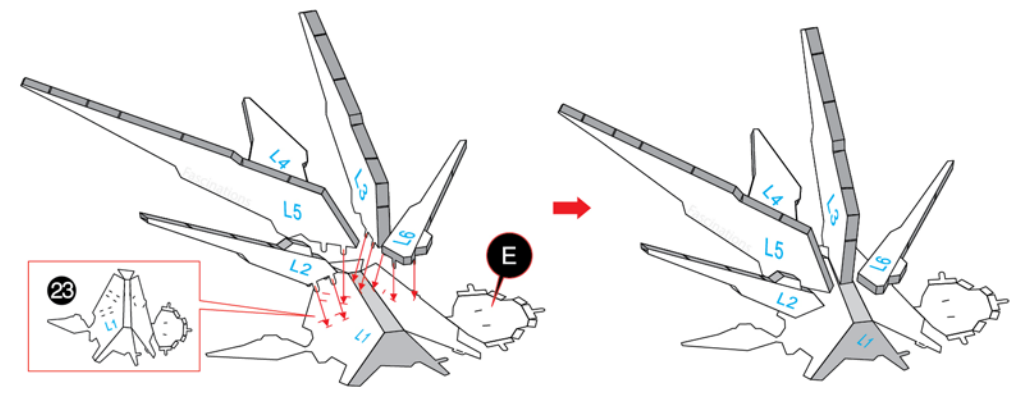
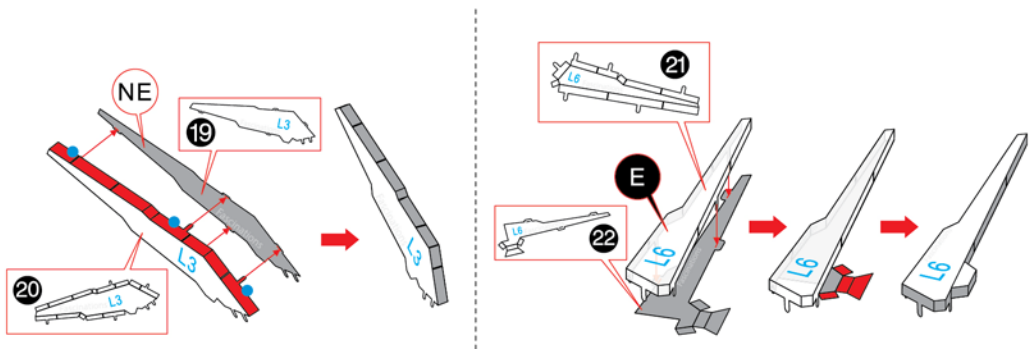
Non-engraved side Lado sem gravura
Côté non gravé Lado no grabado.

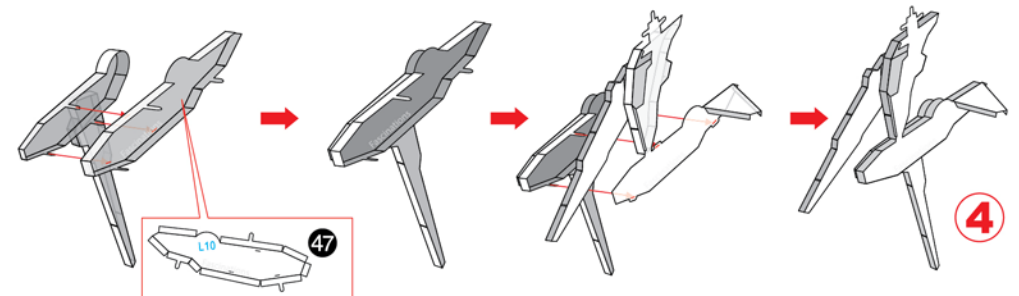
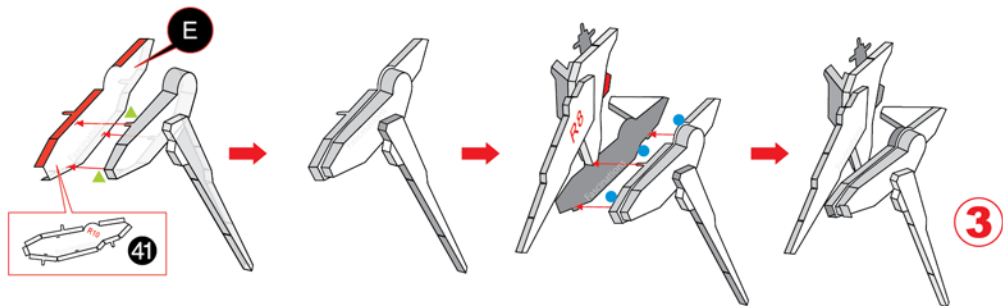
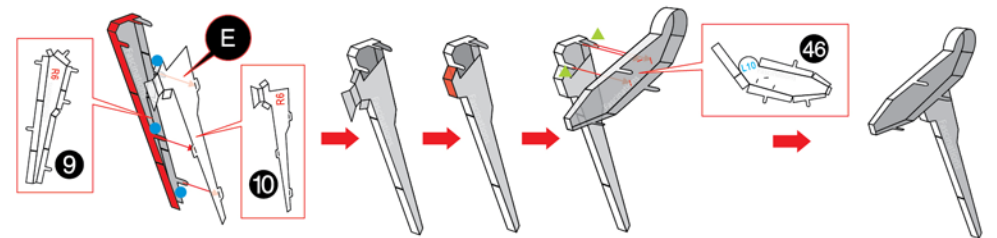
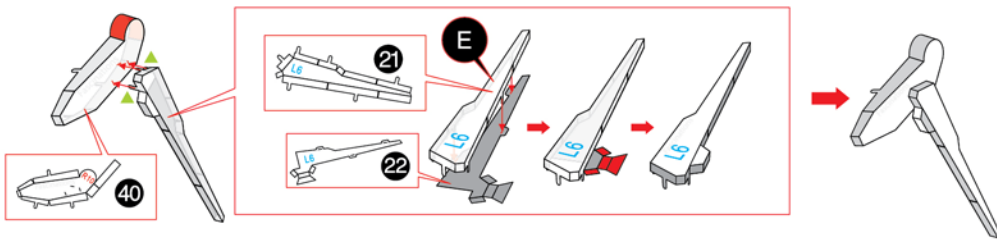
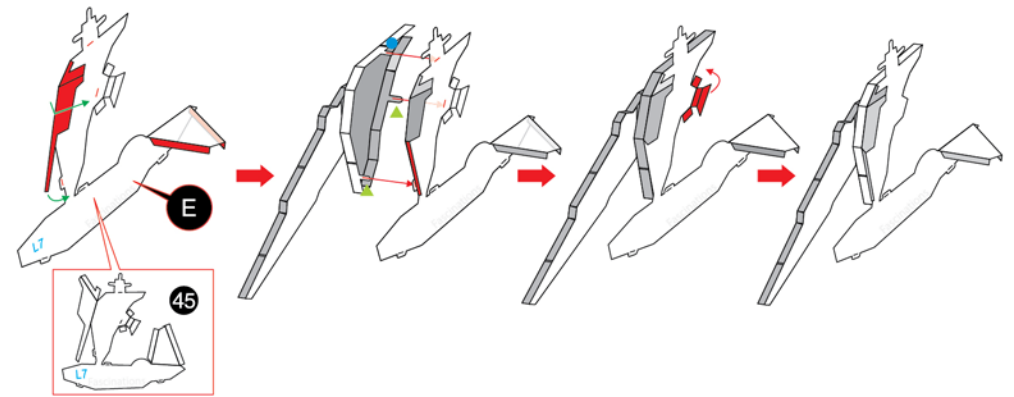
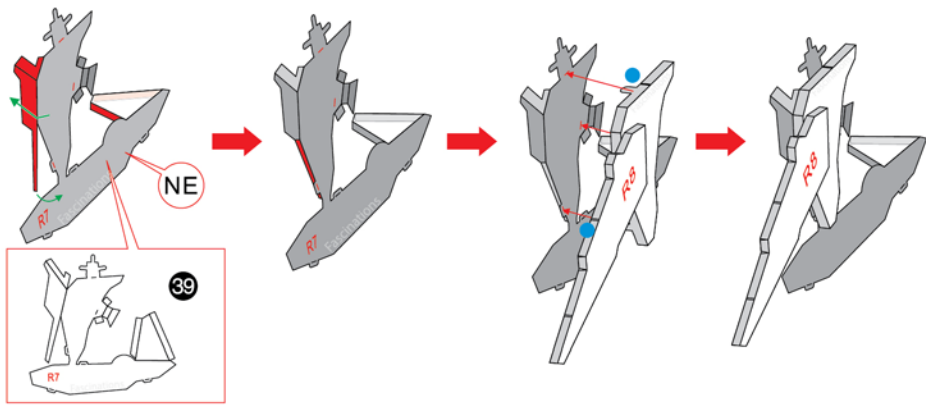
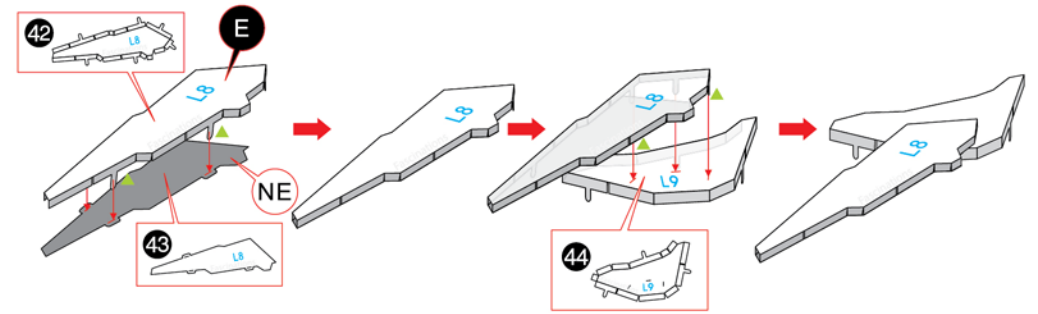
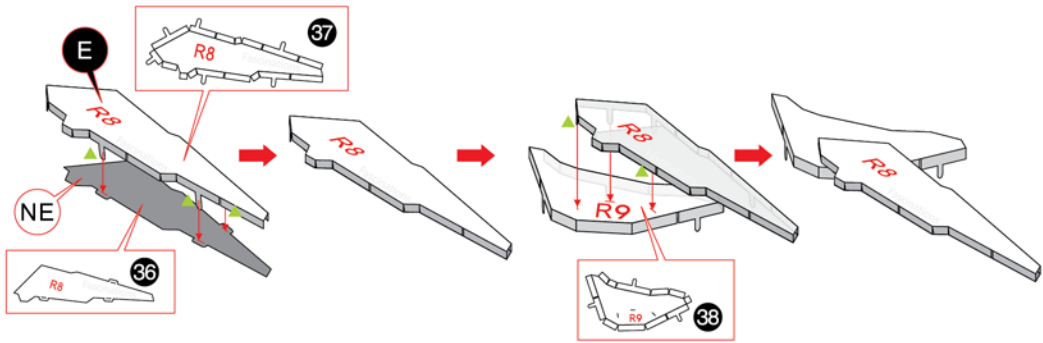


Bend, do not twist! Dobre, não gire!
Plier, ne pas tordre! Doblar, no torcer!

Assembly Flow Chart Fluxograma de montagem
 Diagramme d'assemblage Organigrama de montagem

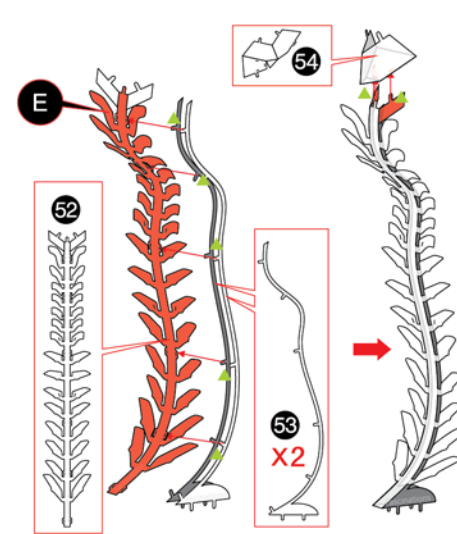
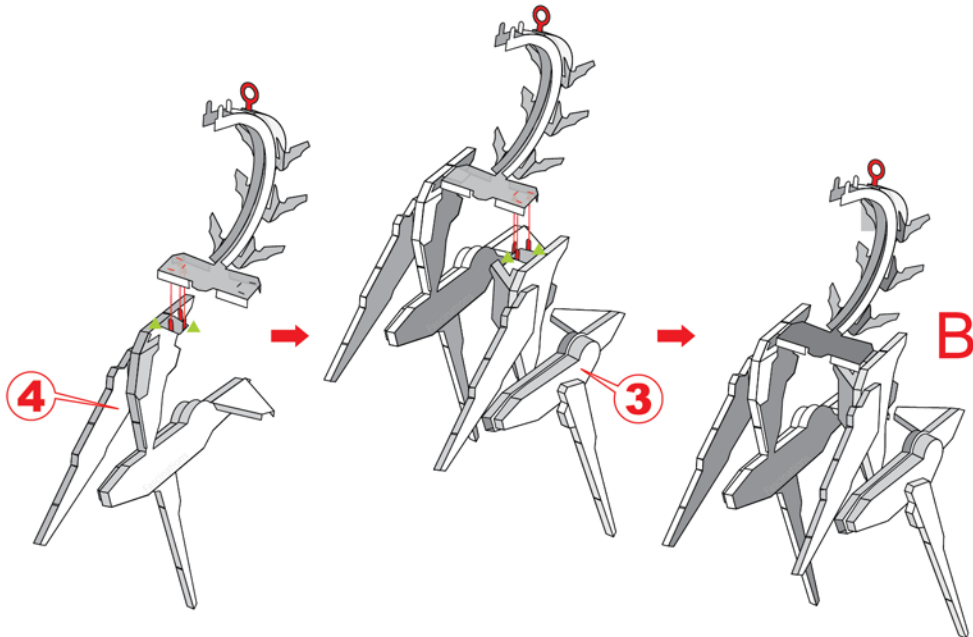
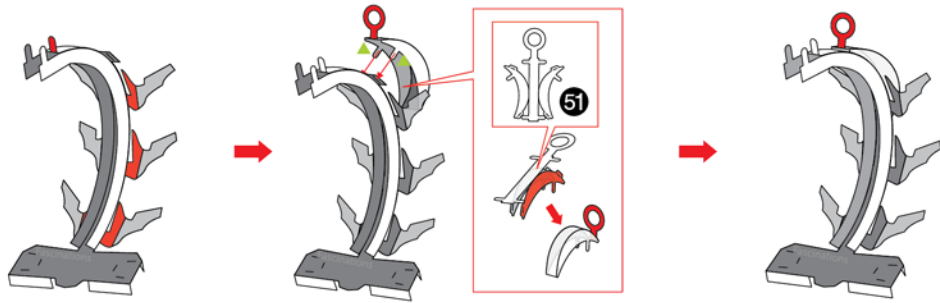
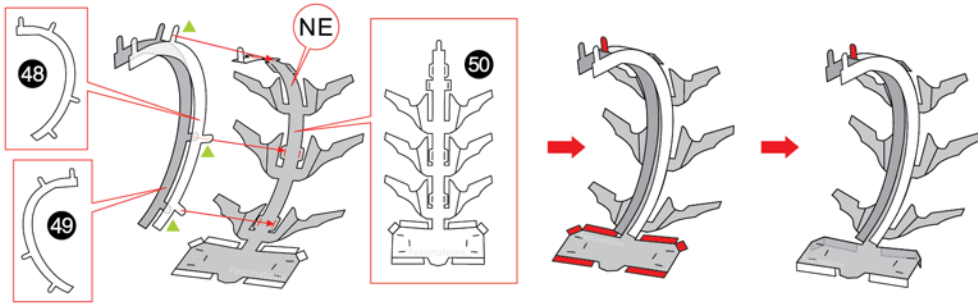






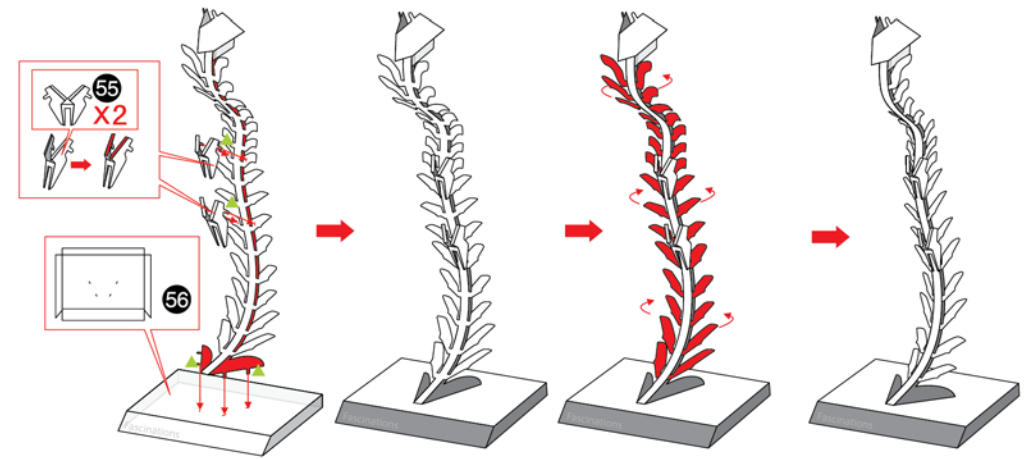
3

4

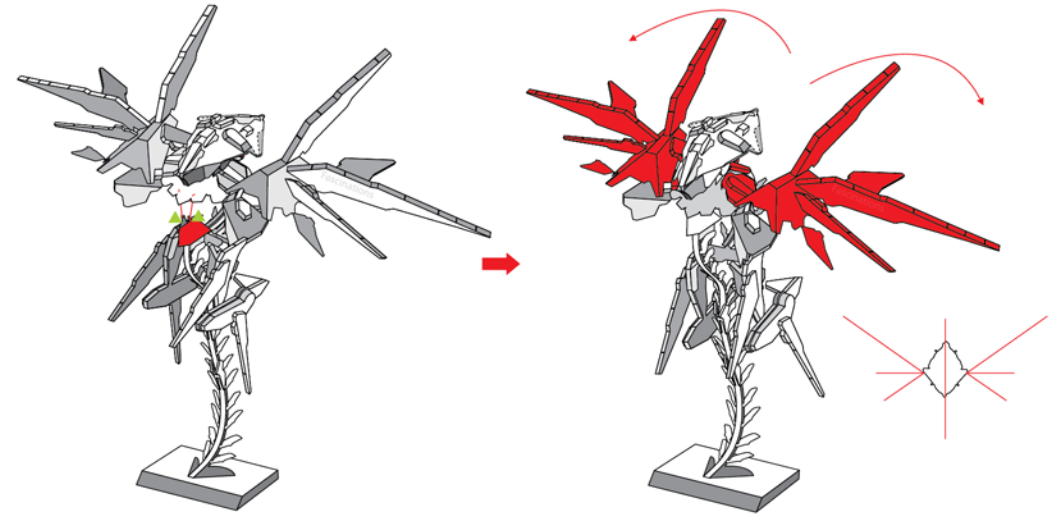
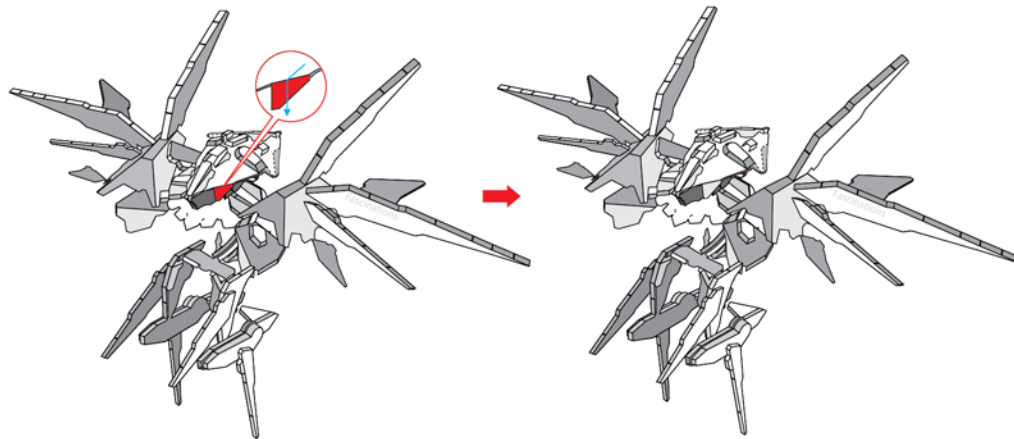
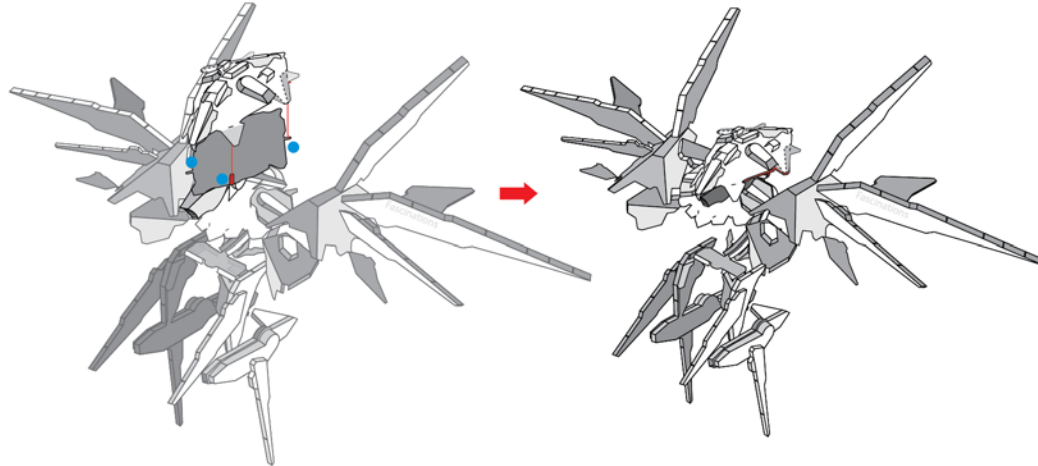
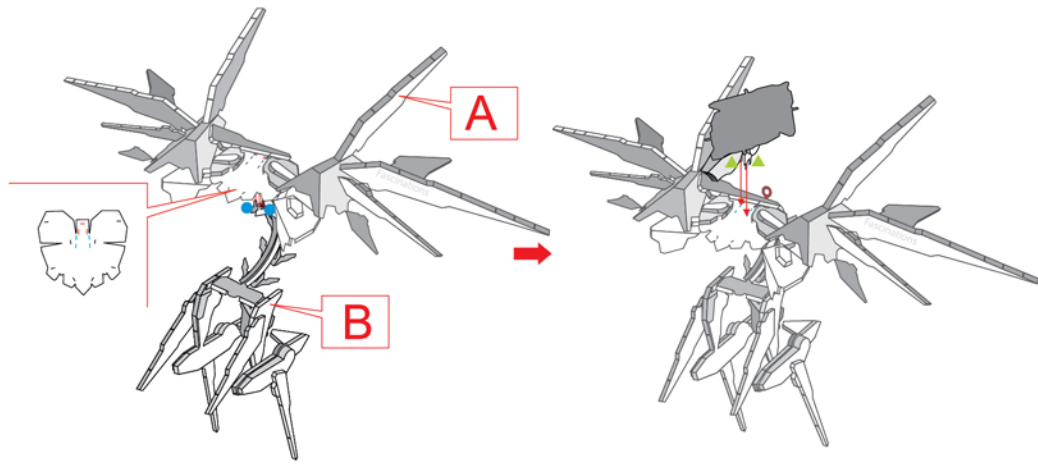


Tip: connect piece 54 to the "backbone" before closing it up
 Dica: conecte a peça 54 ao "suporte principal" antes de fechá-lo
 Conseil : Connecter la pièce 54 à l'« épine dorsale » avant de la refermer
 Consejo: Conecta la pieza 54 a la "espinosa dorsal" antes de cerrarla

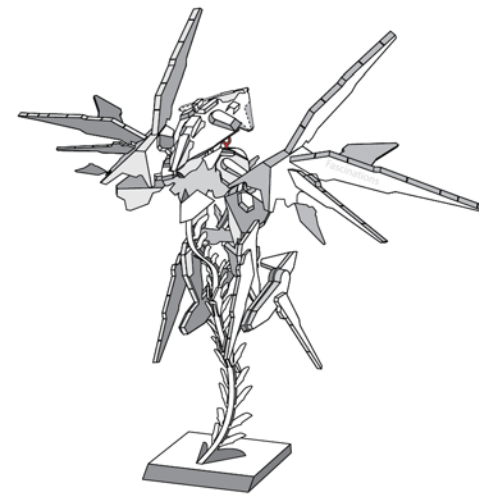
Tip: bend piece 52 to the shape of piece 53 before connecting them together
 Dica: dobre a peça 52 à forma da peça 53 antes de juntá-las
 Conseil : Plier la pièce 52 selon la forme de la pièce 53 avant de les relier ensemble
 Consejo: Pliega la pieza 52 a la forma de la pieza 53 antes de interconectarlas



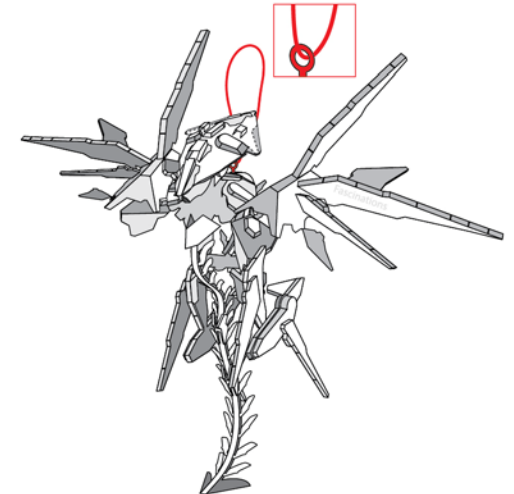
Adding the base (piece 56) is optional. See "Display Options" on the last page
 Adicionar a base (peça 56) é opcional. Consulte "Opções de exibição" na última página
 L'ajout de la base (pièce 56) est facultative. Voir « Options de présentation » à la dernière page
 La adición de la base (pieza 56) es opcional. Consulta "Opciones de presentación" de la última página



Display Options Opções de exibição
Options de présentation Opciones de presentación



Standing base
Base fixa
Base de support
Base de soporte



Hanging ornament
Decoração suspensa
Décoration suspendue
Adorno colgante