

# METAL EARTH<sup>®</sup>

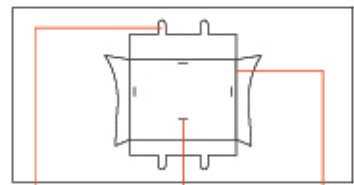
## 3D METAL MODEL KITS



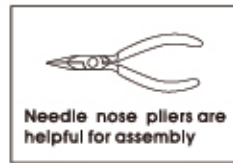
It is highly recommended that you visit [www.fascinations.com/metalearth360/mms270](http://www.fascinations.com/metalearth360/mms270) to see the completed model before assembling your own



mms270



Insertion tabs are inserted and then folded  
 Insertion holes  
 Fold lines can be seen as shown here



Needle nose pliers are helpful for assembly

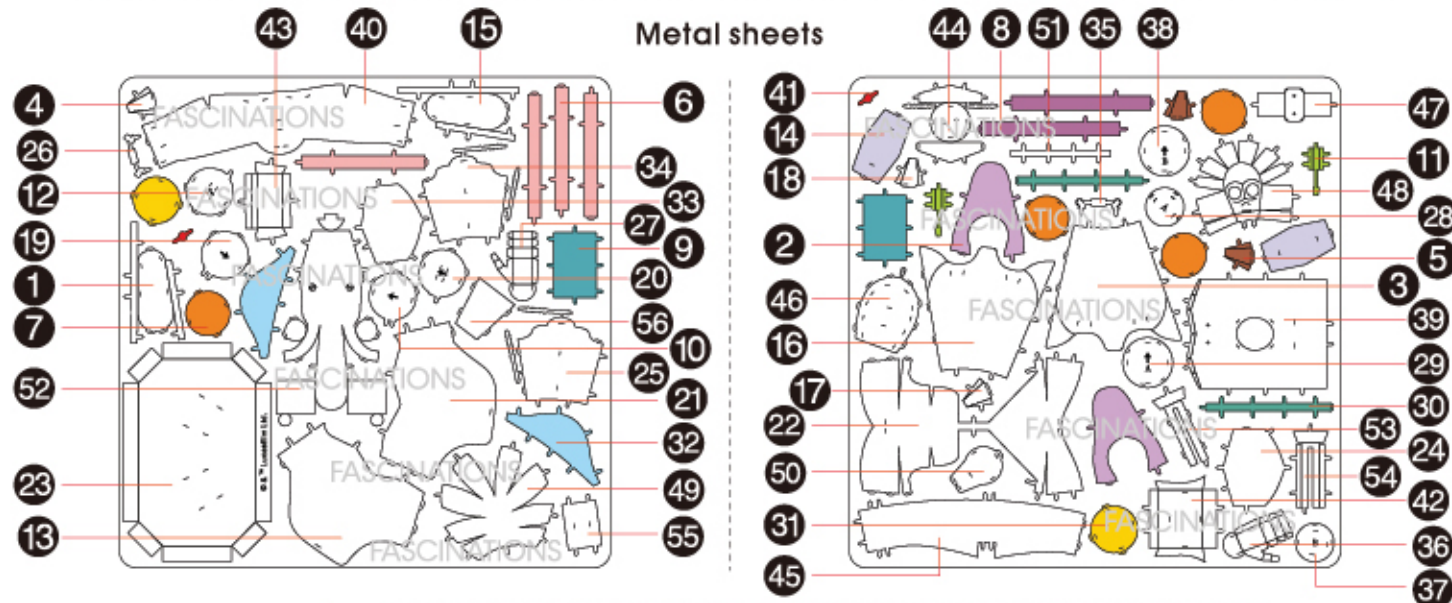
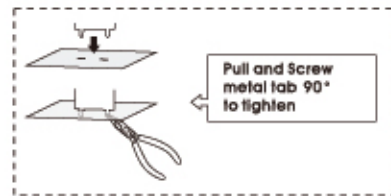
Legends:

- M** Mirror finish
- E** Engraved side Color side
- NE** Non-engraved side Non-color side
- Attention point

### To create the best connections

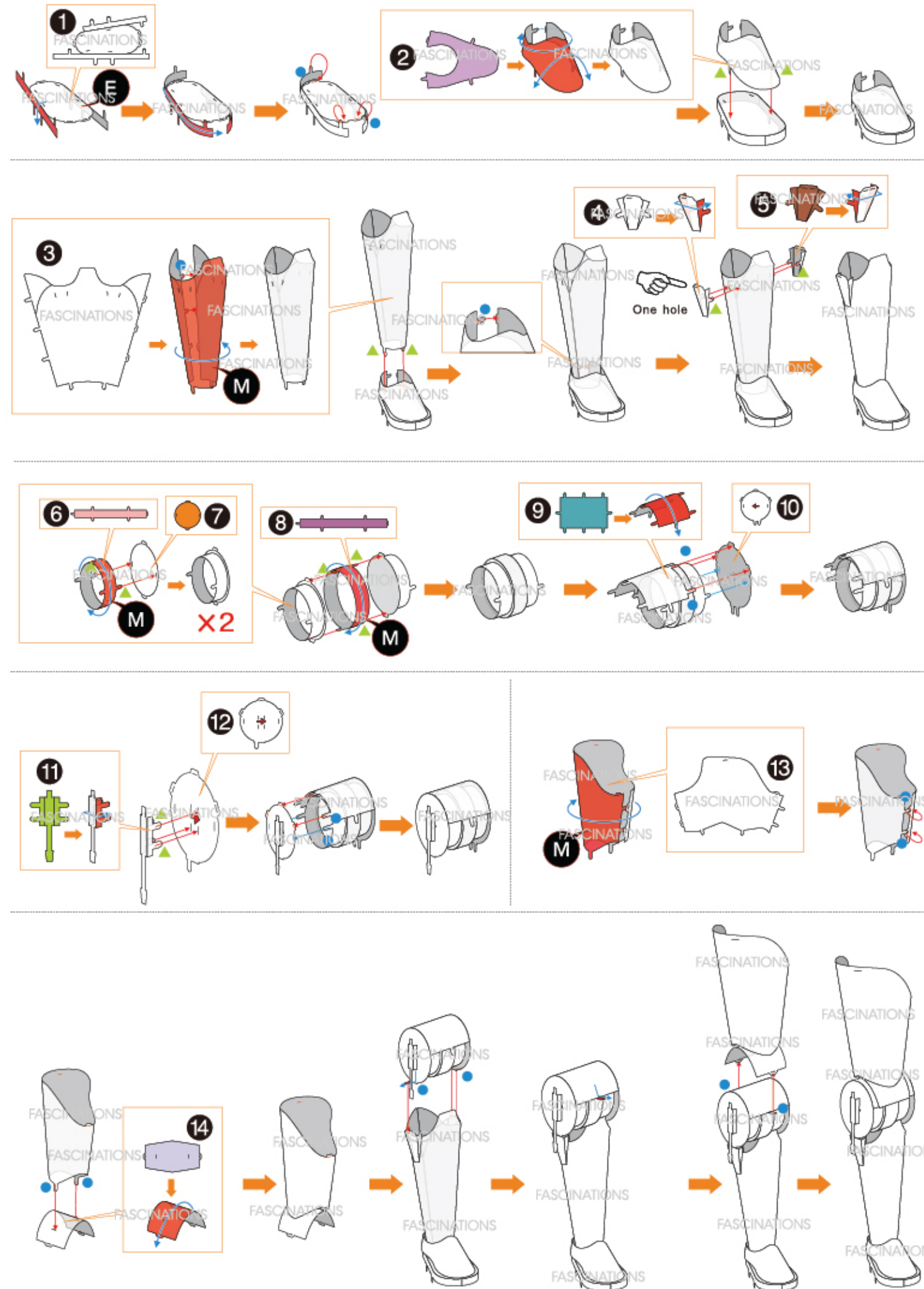
Insert tab and bend 90 degrees for most visible areas

Insert tab and twist 90 degrees is best in some areas to ensure a tight connection

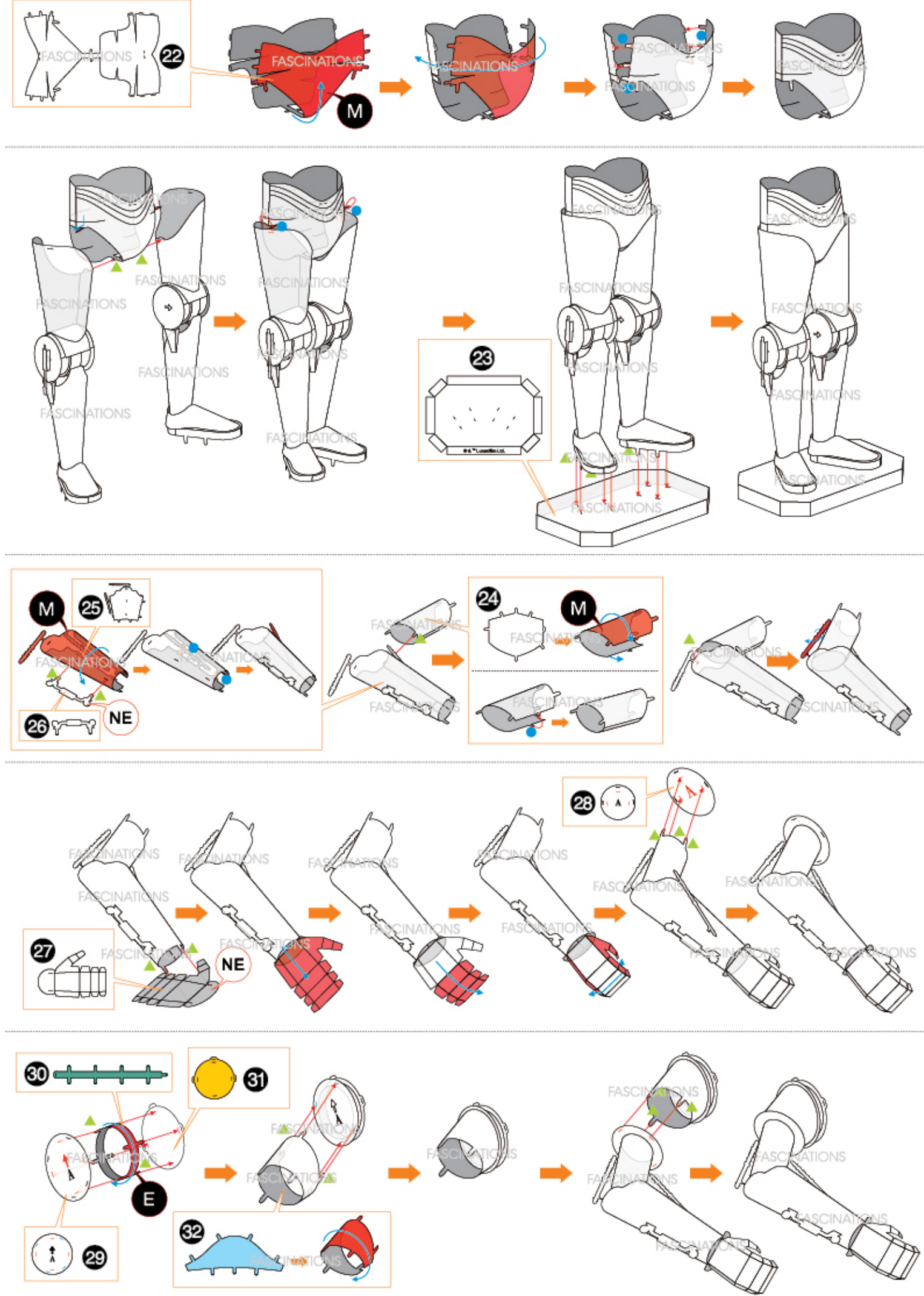
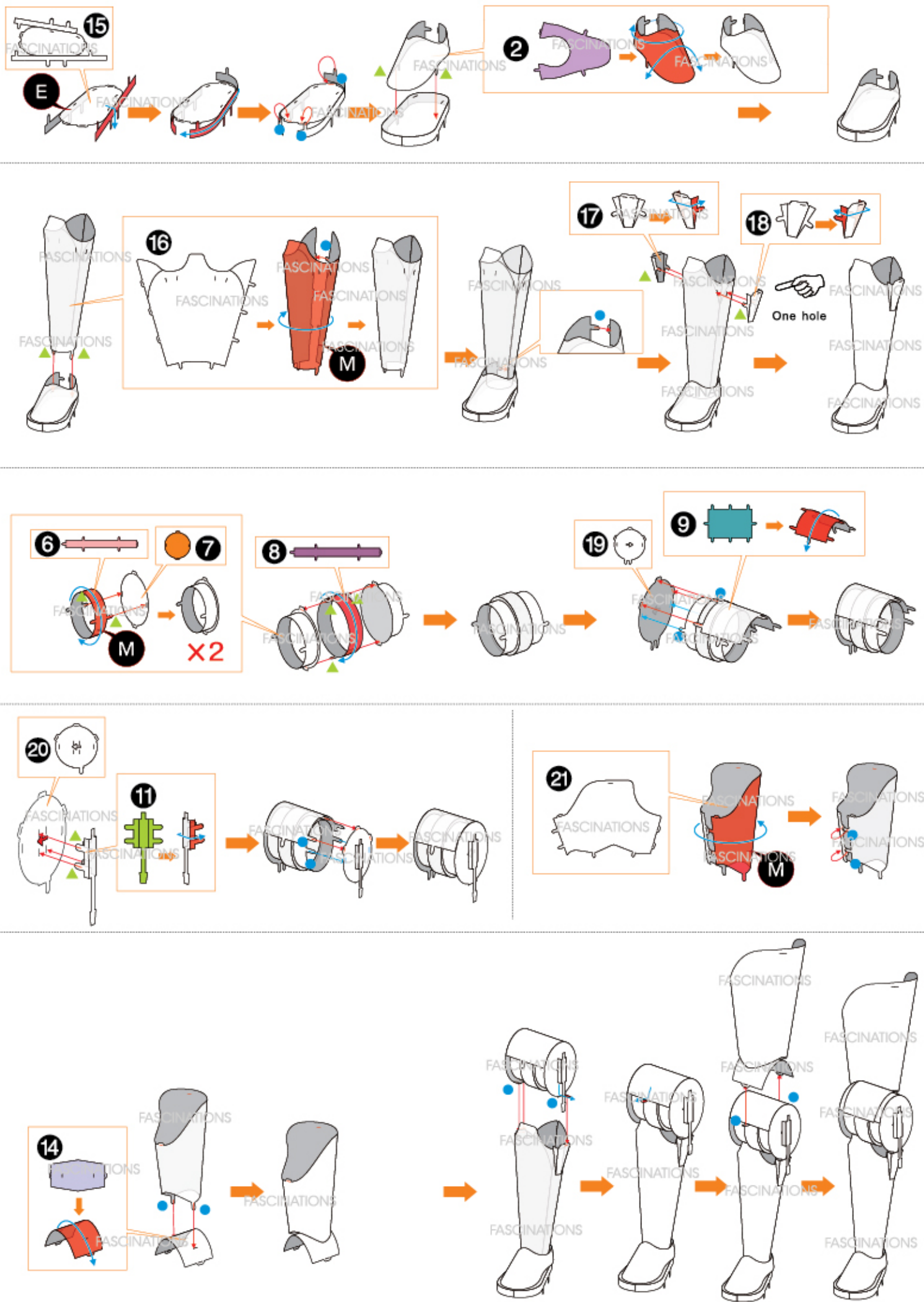


In order to avoid possible injury from sharp edges, please carefully discard the metal sheet after parts have been removed

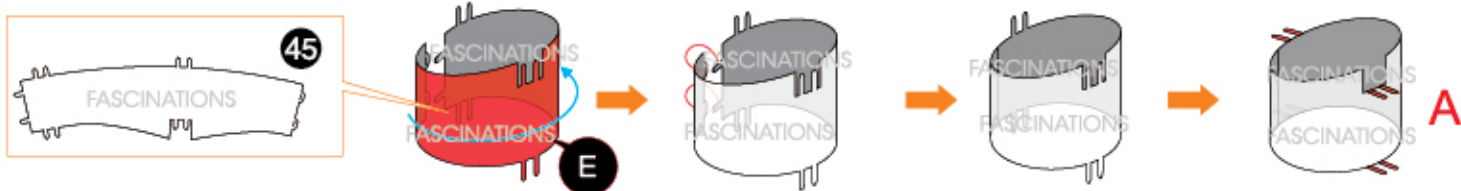
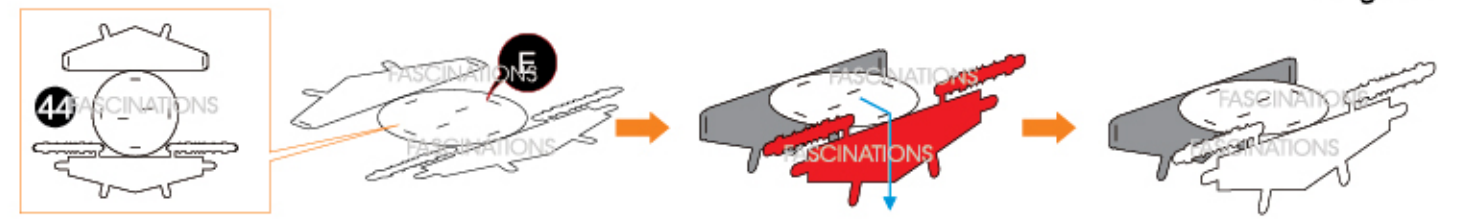
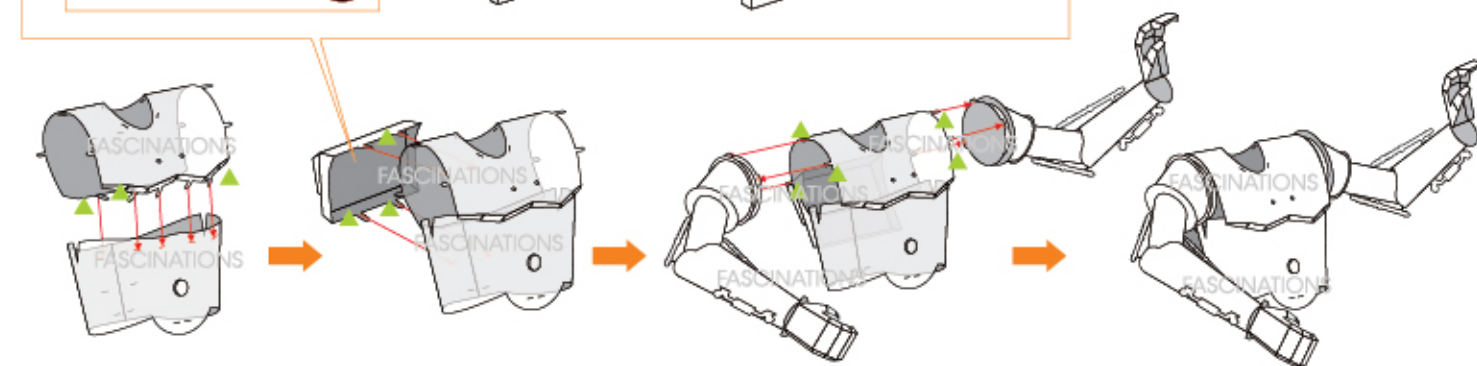
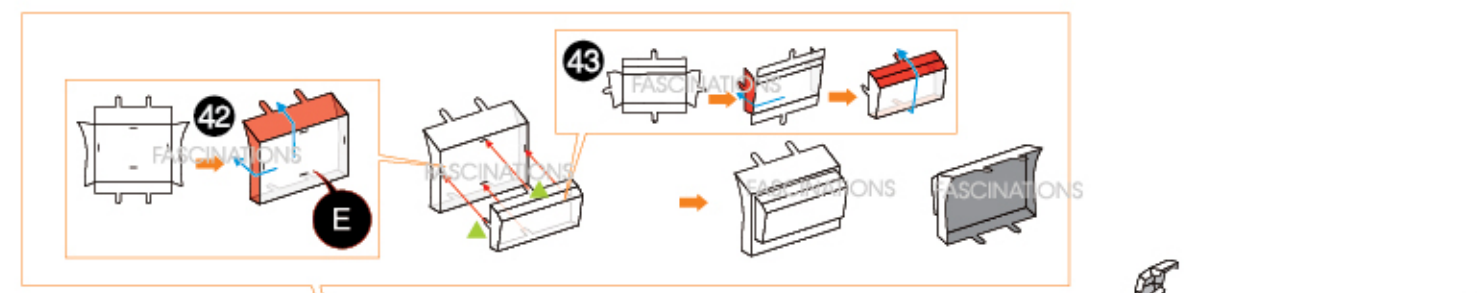
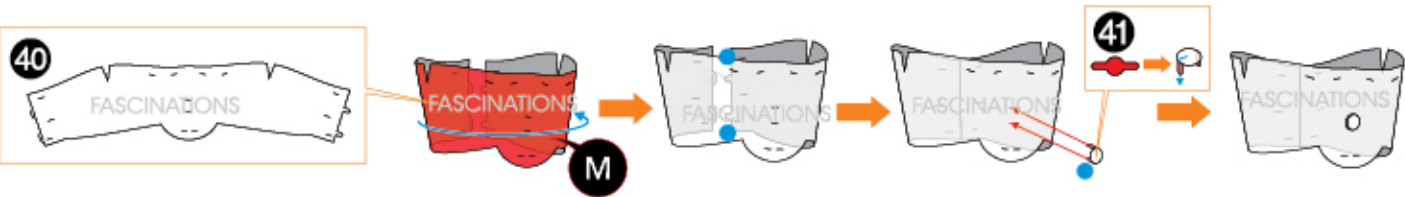
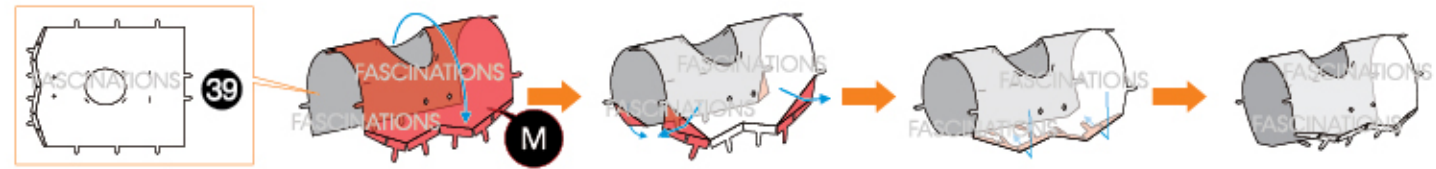
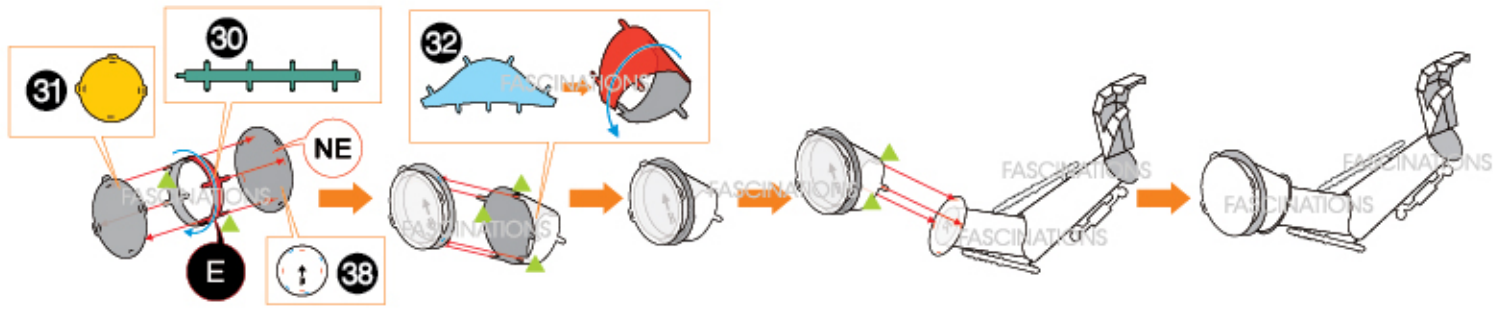
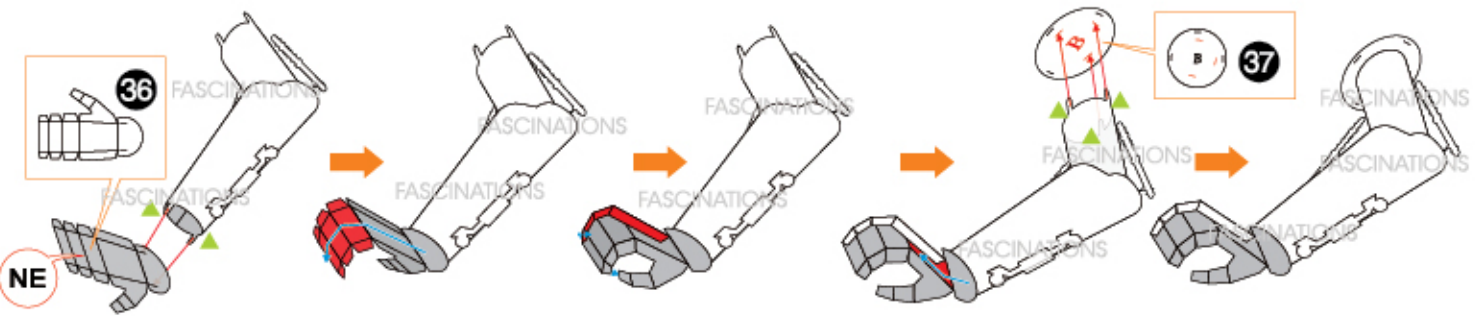
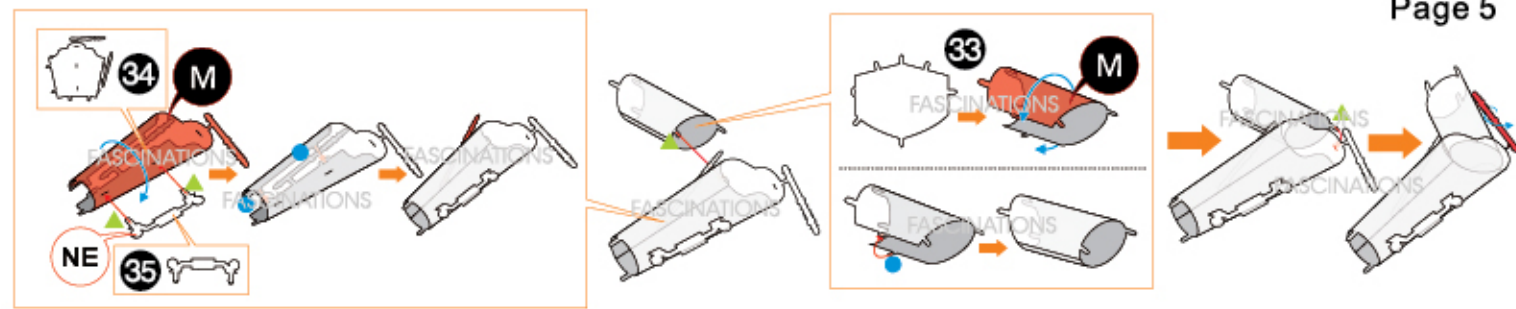
### Assembly Flow Chart





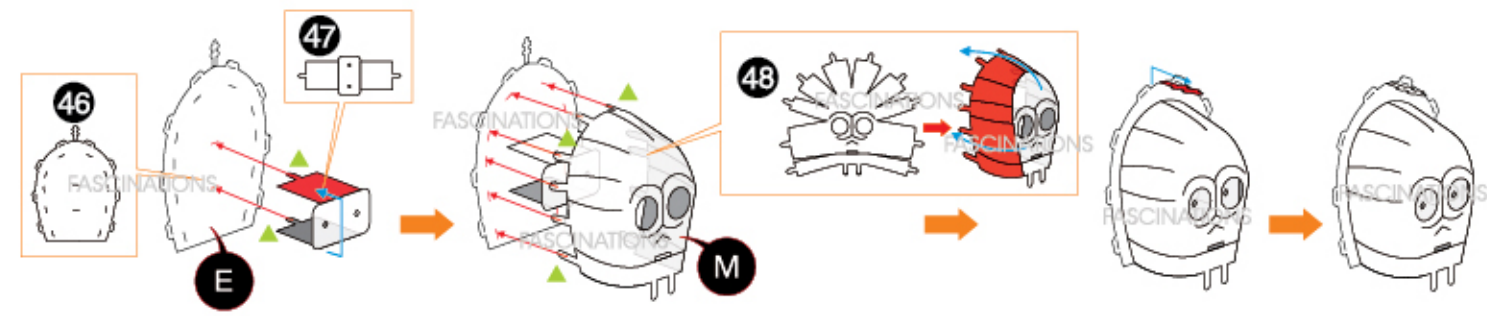




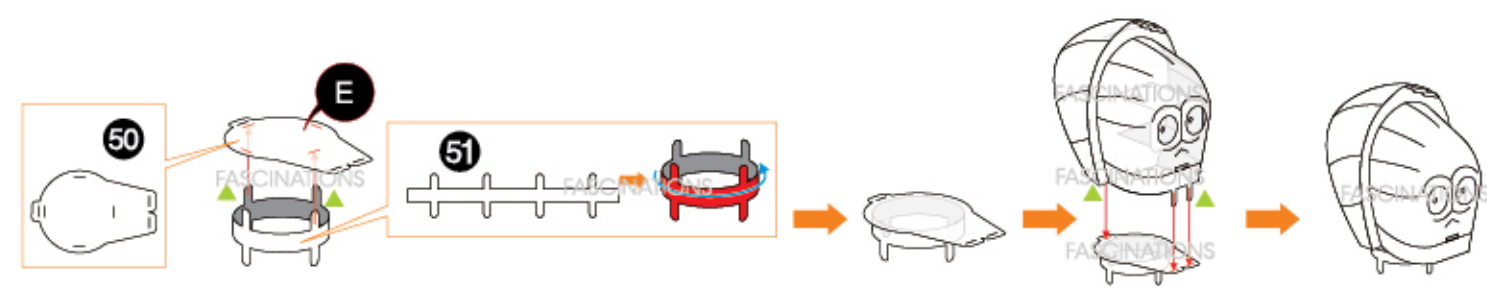
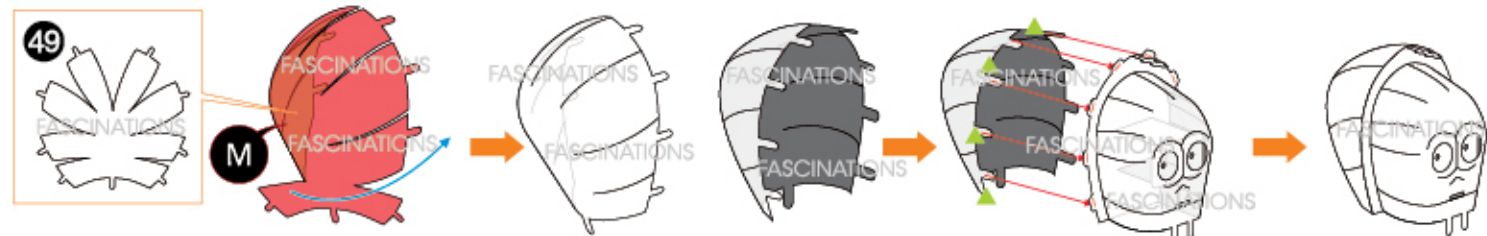


### Display Option 1

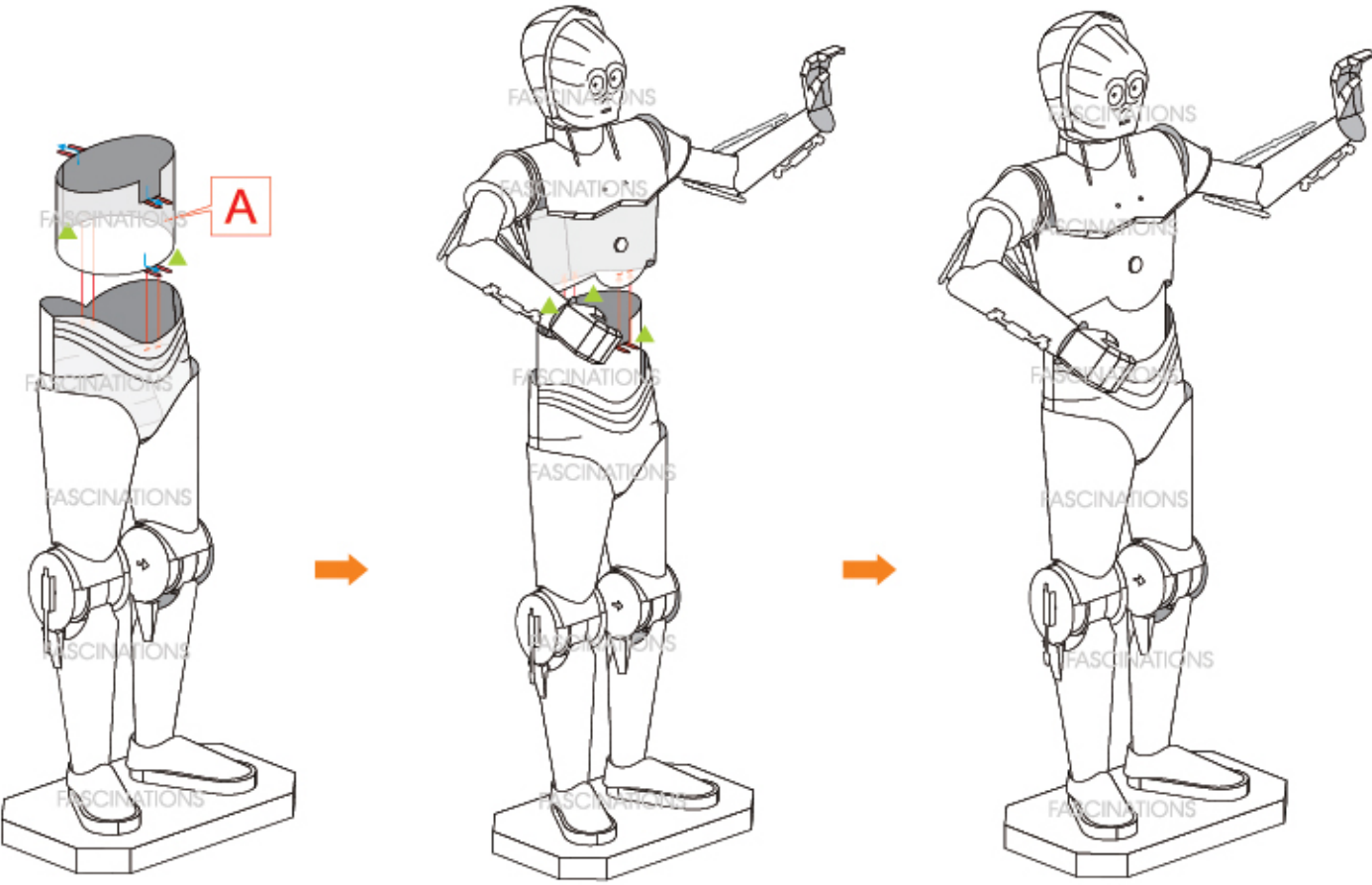
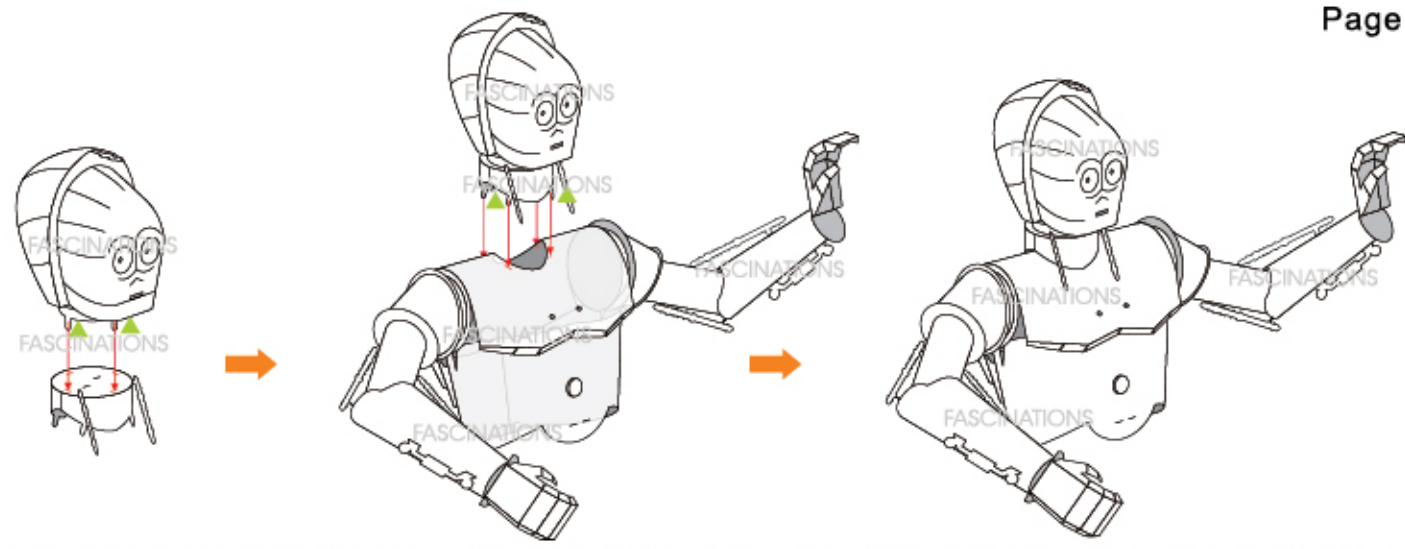
Tip: connect the 2 tabs at the top of the head first



Tip: connect the 2 tabs at the top of the head first







Display Option 2

