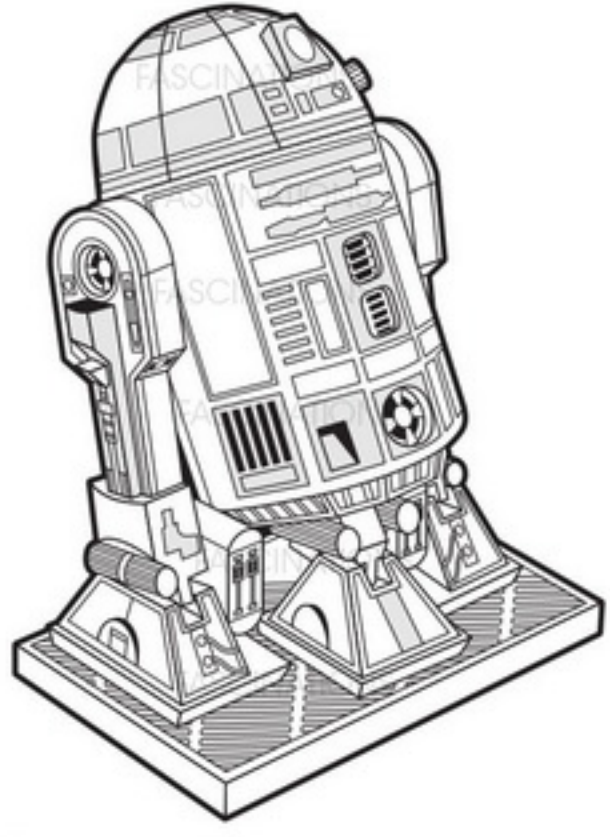


R2-D2™

360° view

It is highly recommended that you visit www.fascinations.com/metalearth360/mms250 to see the completed model before assembling your own

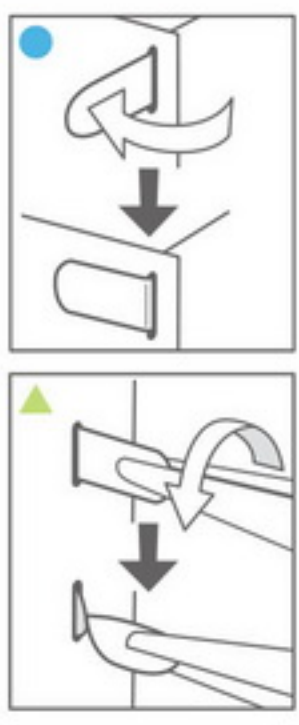


To create the best connections

● Insert tab and bend 90 degrees for most visible areas

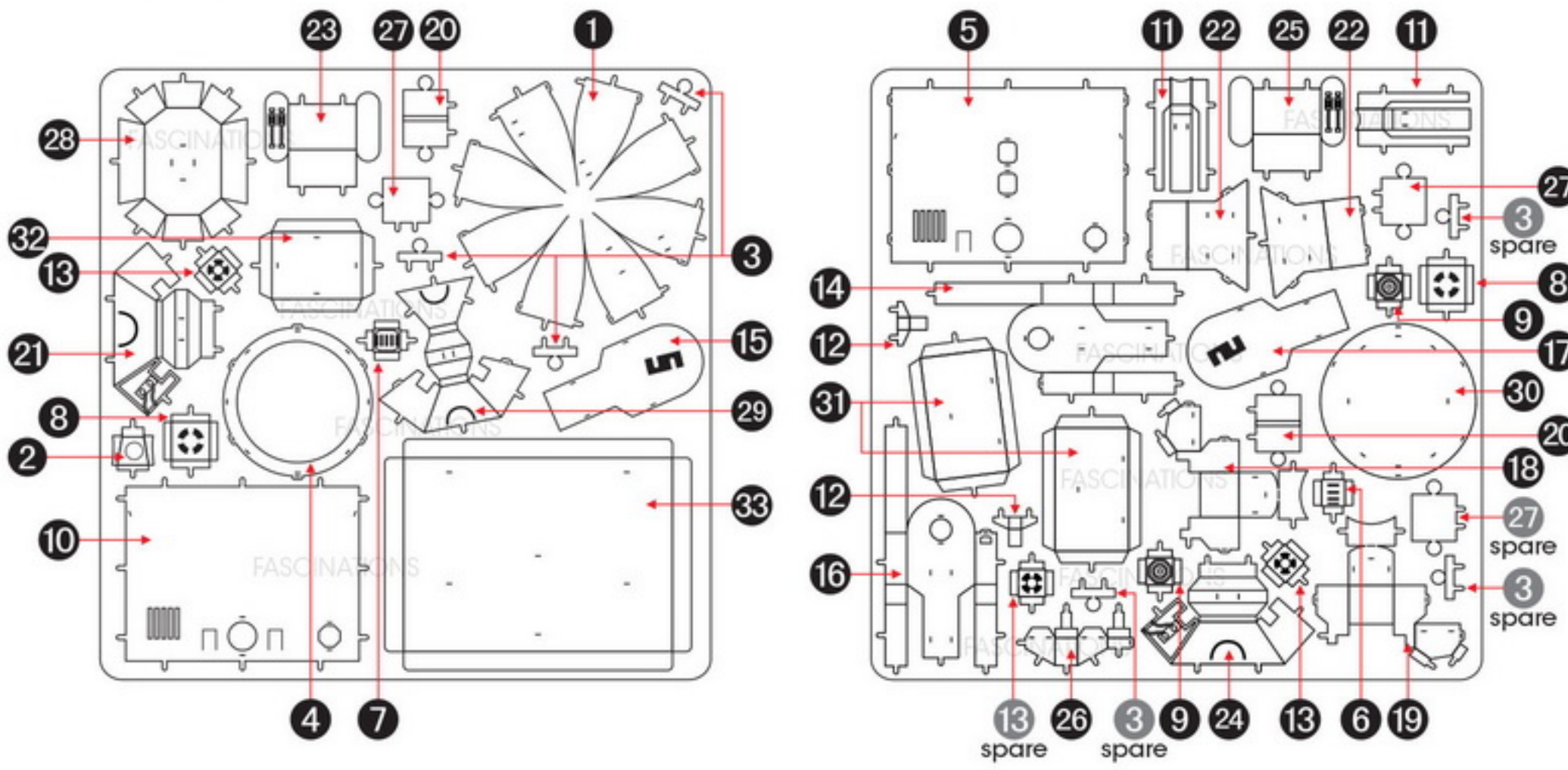
▲ Insert tab and twist 90 degrees is best in some areas to ensure a tight connection

Needle nose pliers are helpful for assembly



Insertion tabs are inserted and then folded
Insertion holes
Fold lines can be seen as shown here

Metal Sheet

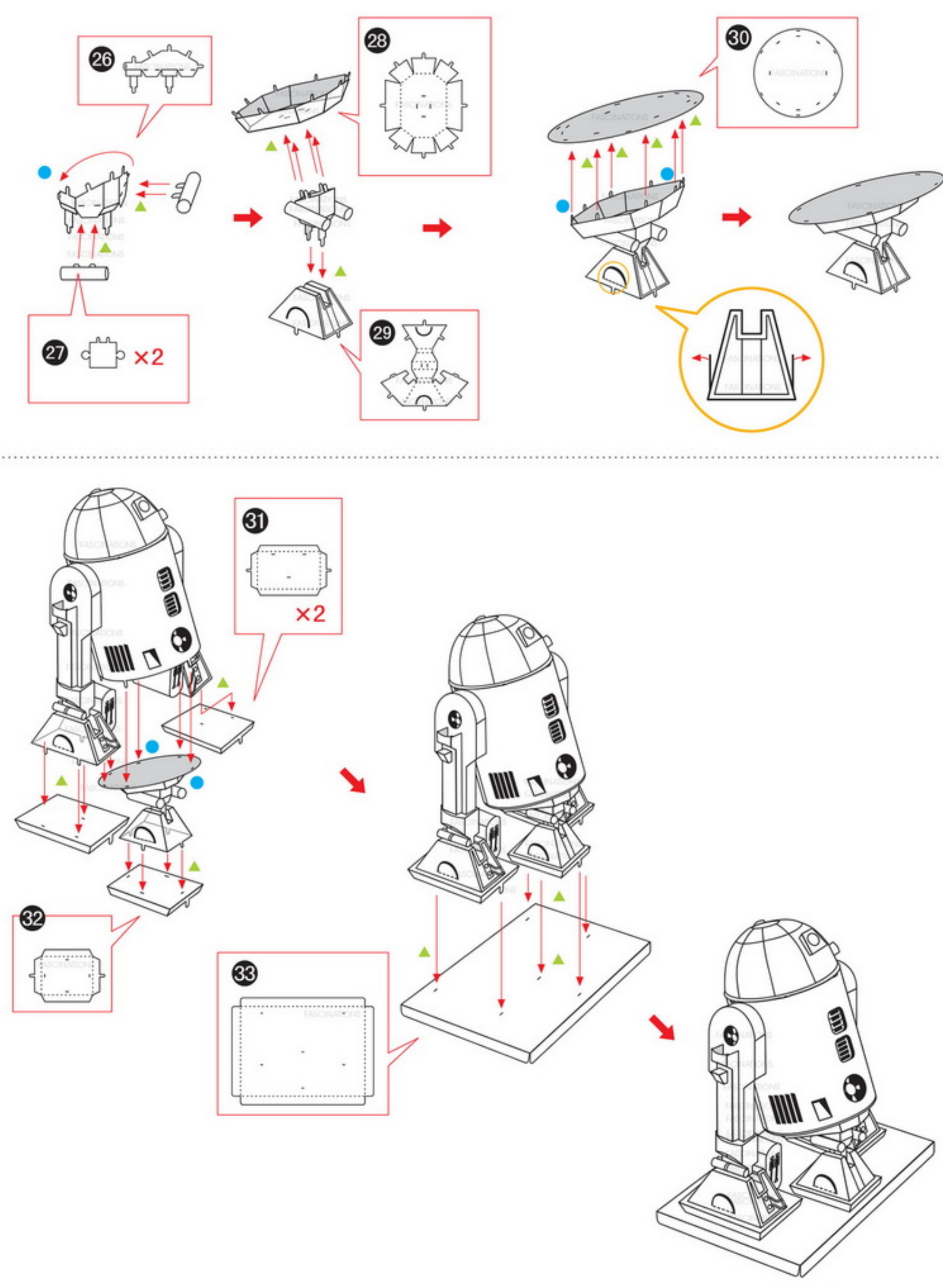
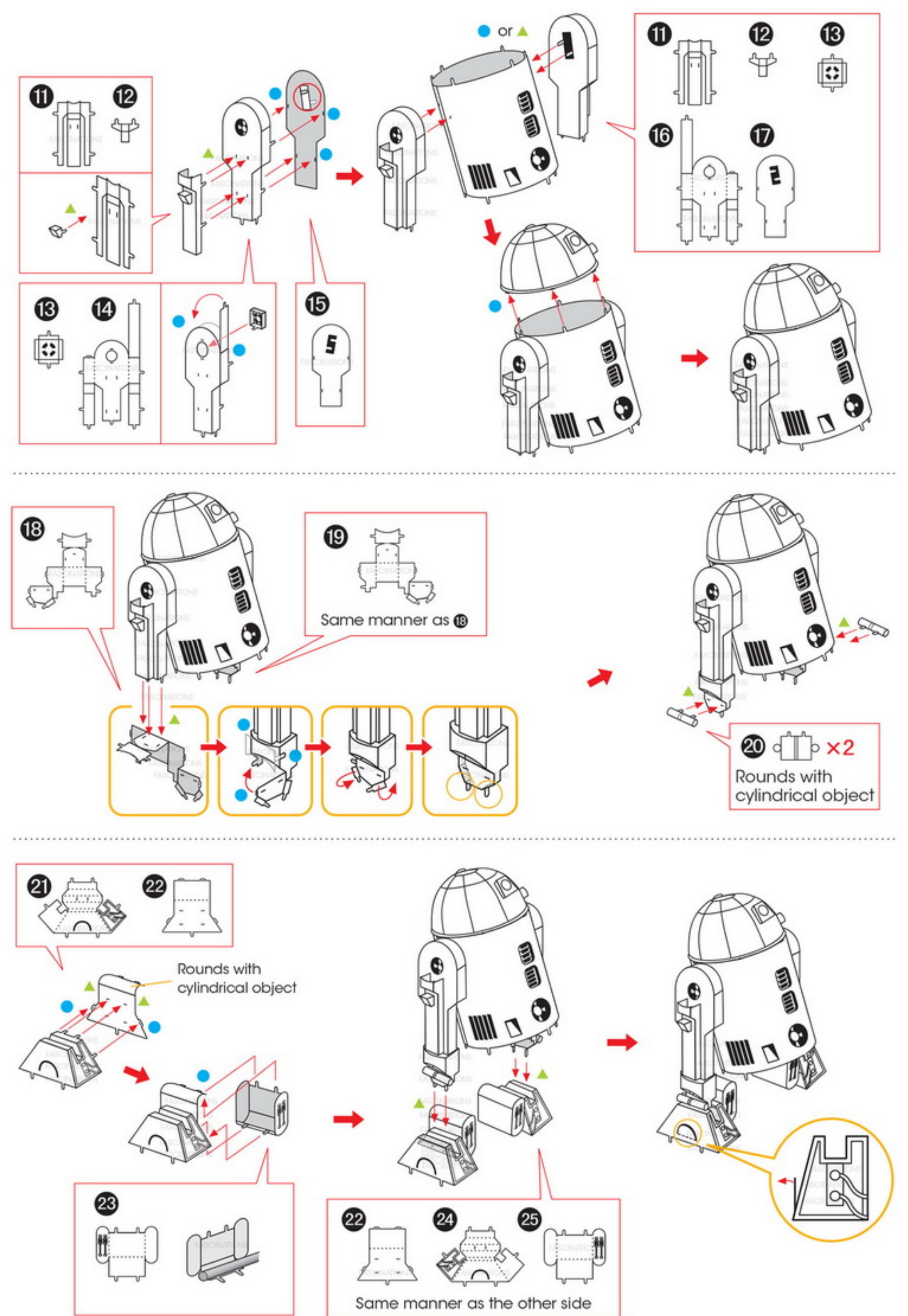
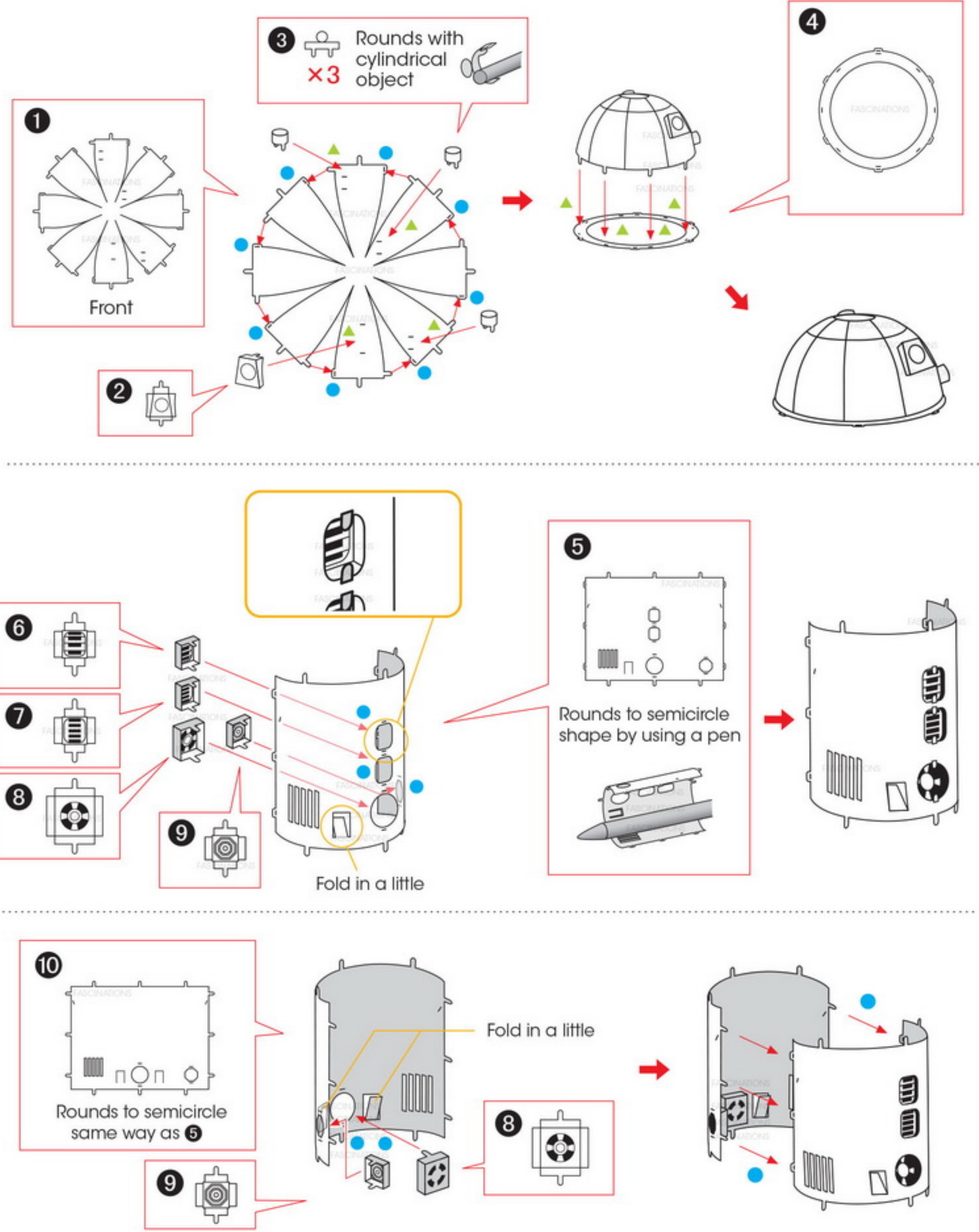


Notes:

In order to avoid possible injury from sharp edges, please carefully discard the metal sheet after parts have been removed.

This product is not a toy. Keep out of reach of children.

Assembly Flow Chart



Completed!