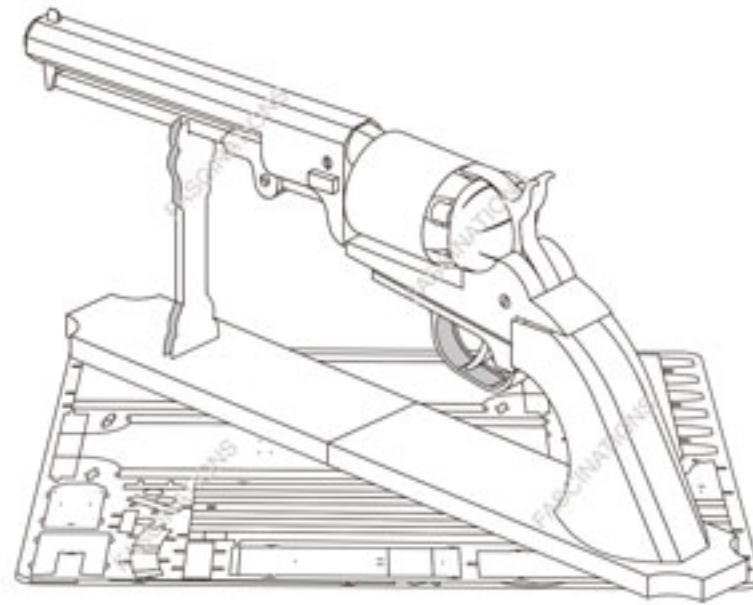


Metal Earth

3D METAL MODEL KITS



Wild West Revolver
Item No. MMS187



It is highly recommended that you visit www.metalearth.com/360/mms187 to see the completed model before assembling your own

Legends:

- E** Engraved/Color side
- NE** Non-engraved/Silver side
- Attention point
- Insert tab and bend 90 degrees
- Insert tab and twist 90 degrees

Recommended tools:

-Wire cutters: helpful for taking parts from the metal sheets.

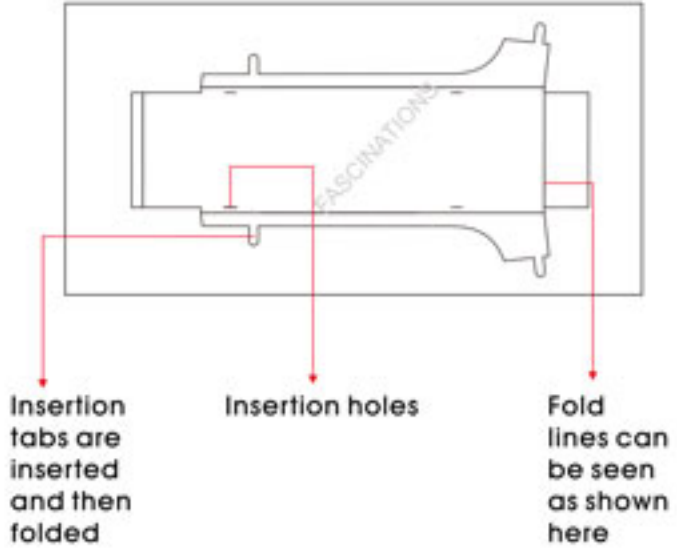


-Tweezers or needle nose pliers: helpful for folding parts, bending and twisting tabs.



Assembly tip:

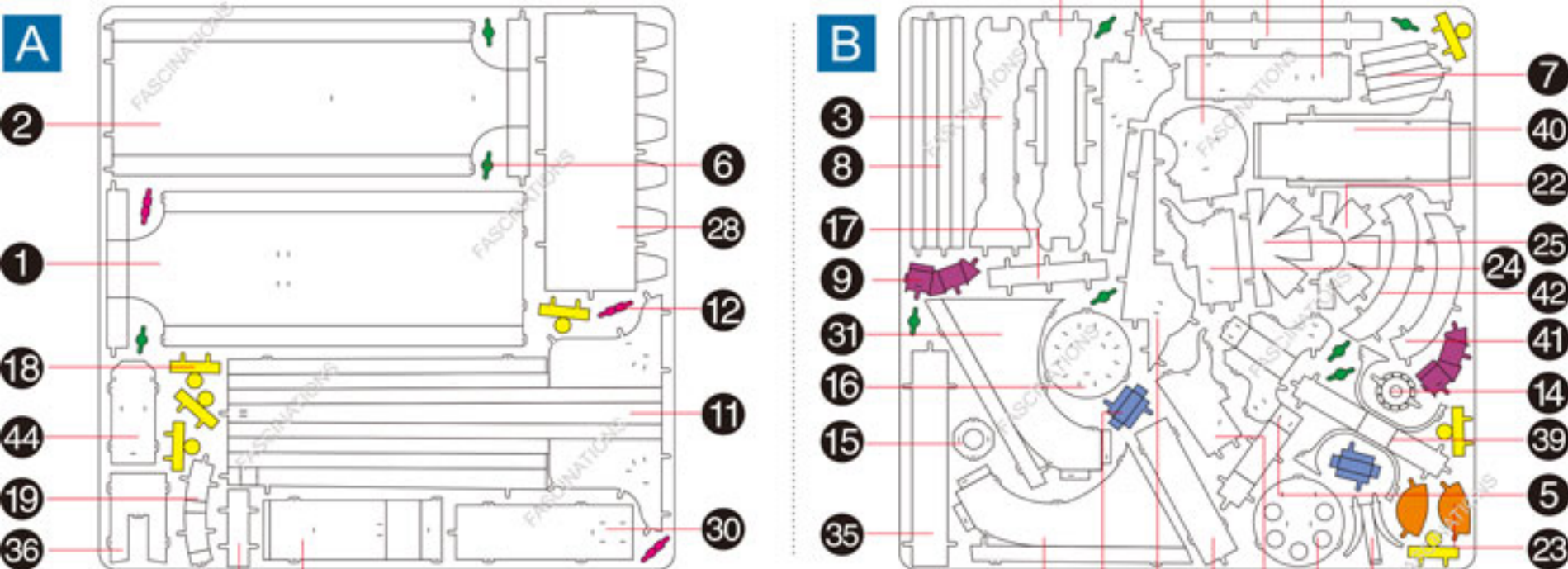
If needed, slightly twist tabs to hold parts together then untwist and bend them down for a nice finish



Insertion tabs are inserted and then folded
Insertion holes
Fold lines can be seen as shown here

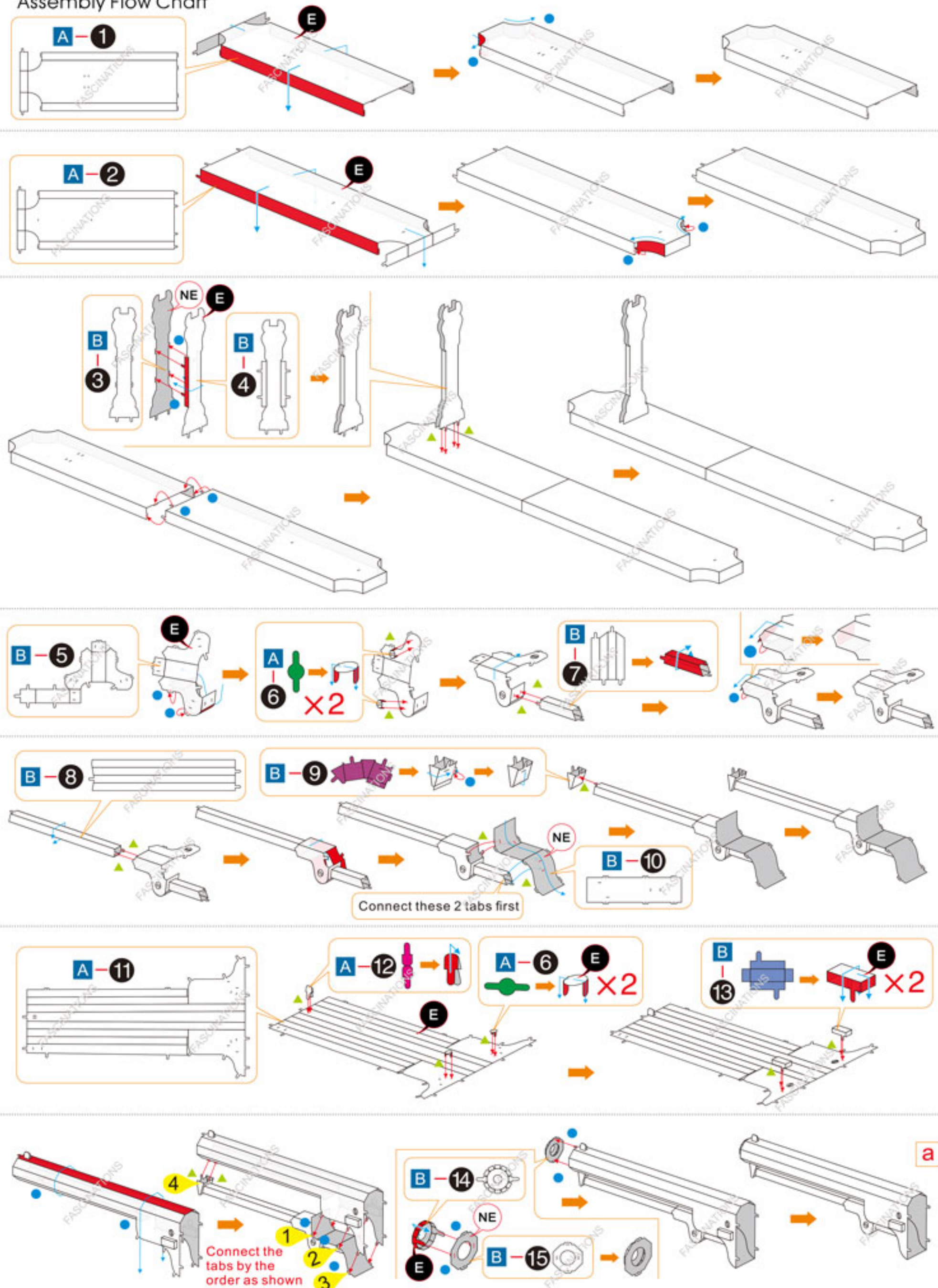
Parts that are in the same color are duplicates

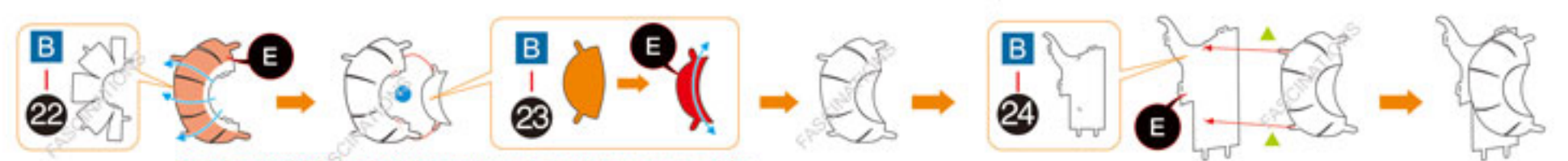
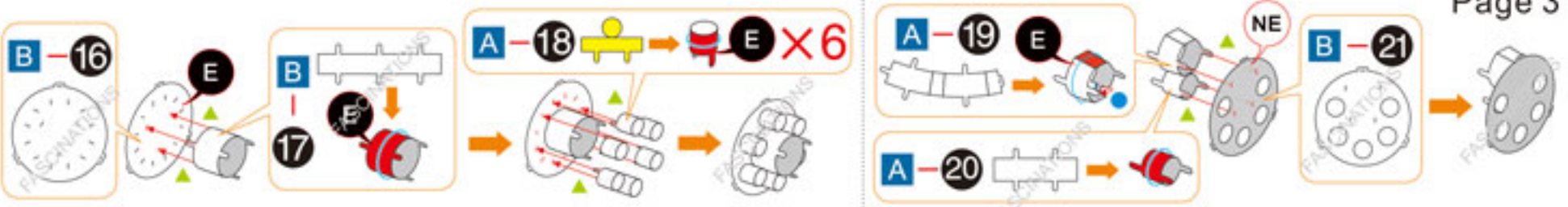
Metal sheets



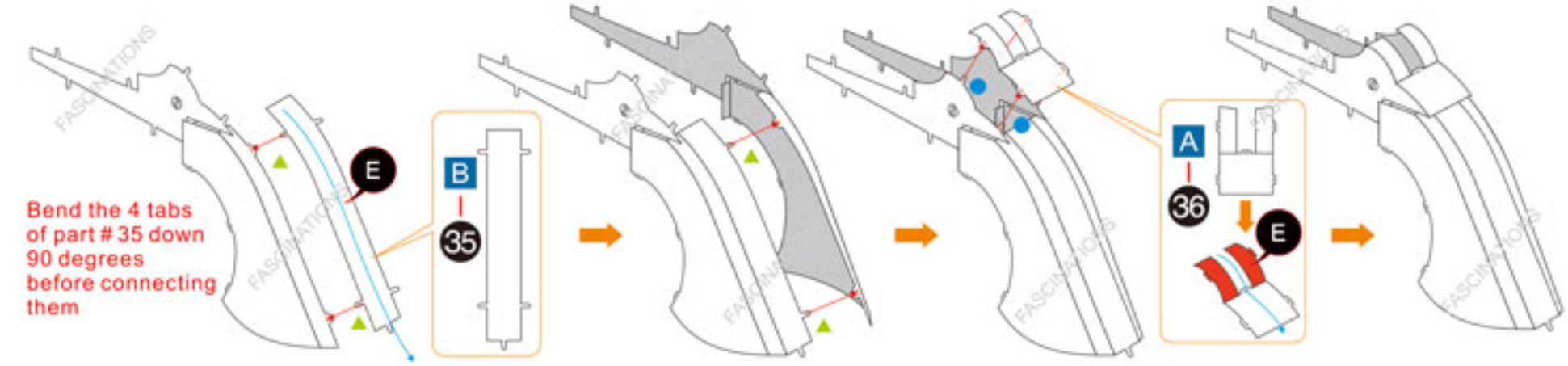
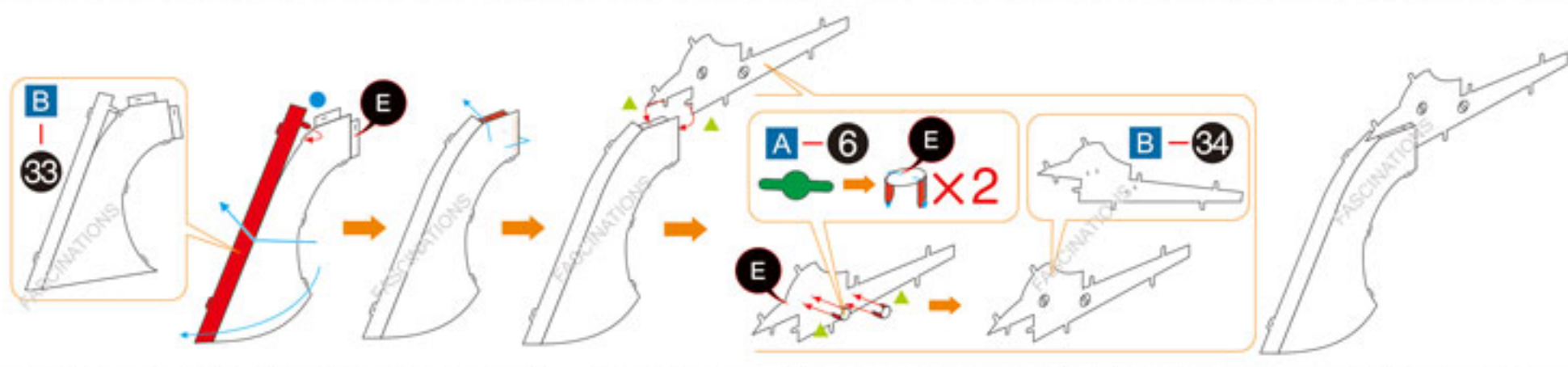
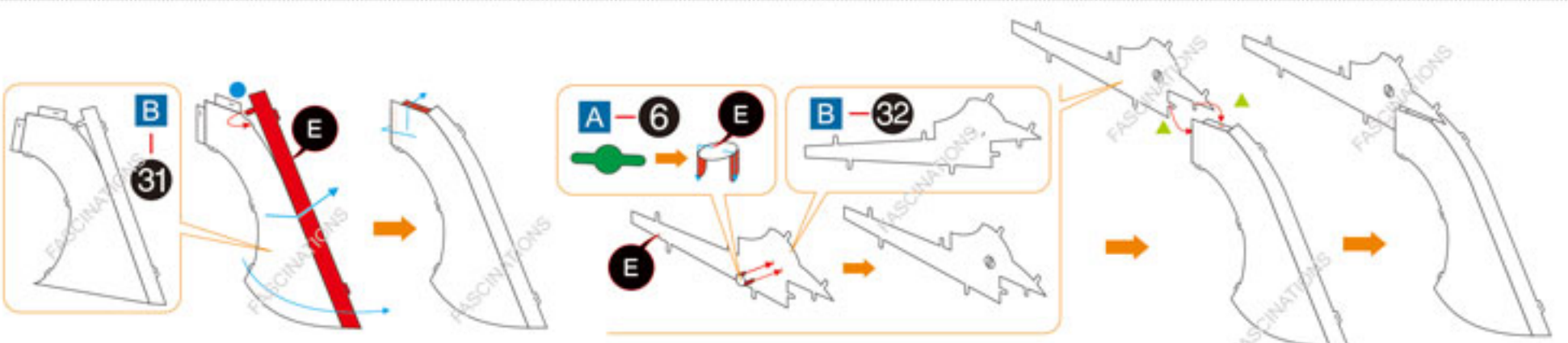
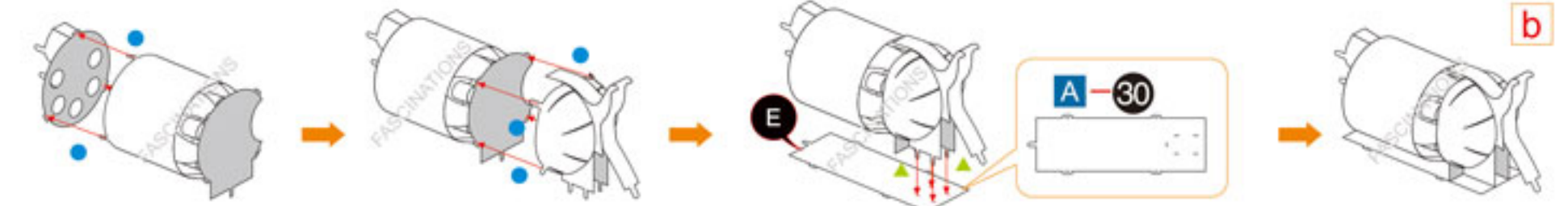
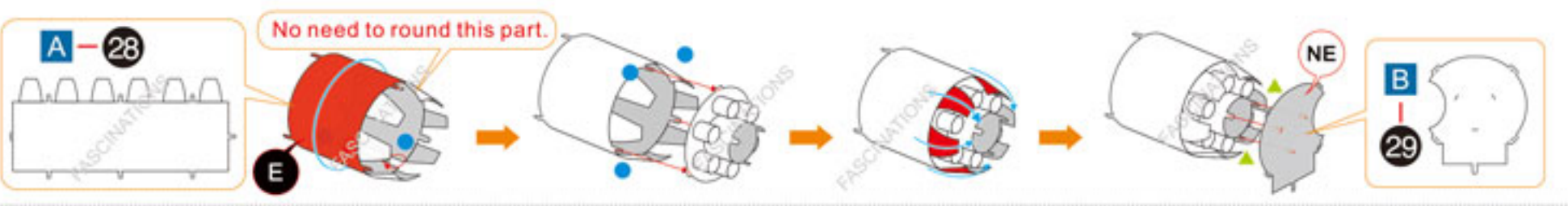
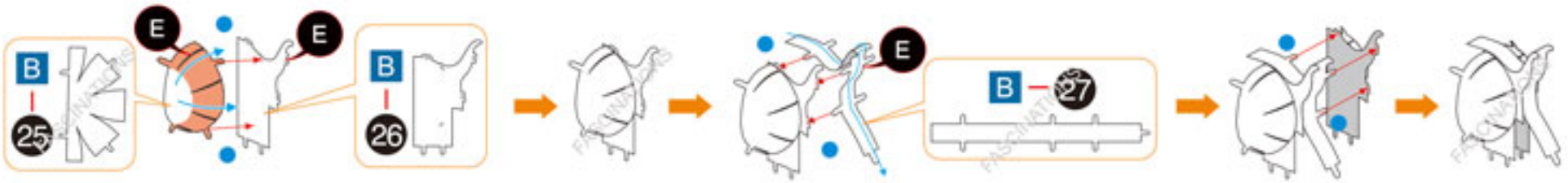
In order to avoid possible injury from sharp edges, please carefully discard the metal sheets after parts have been removed

Assembly Flow Chart

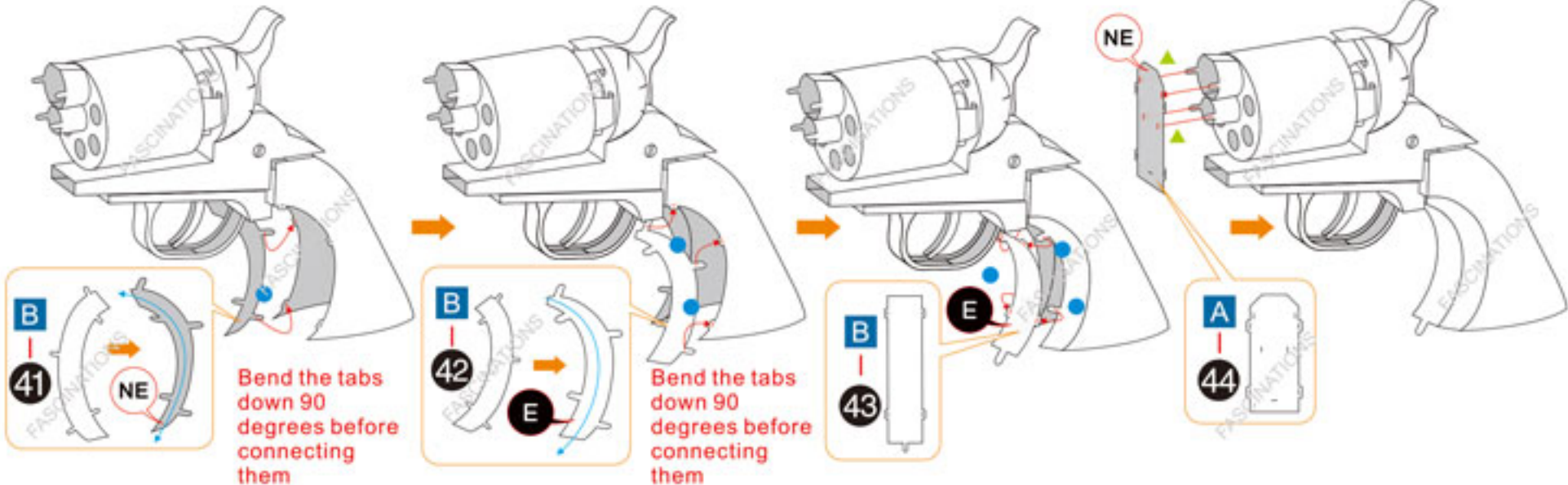
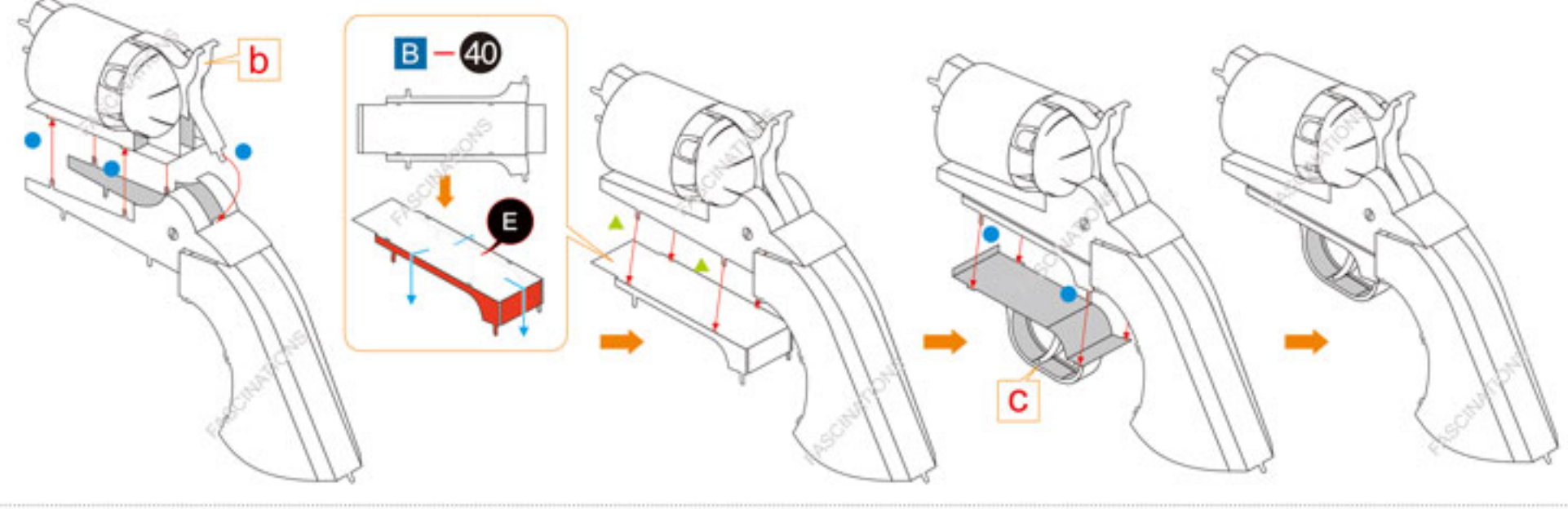
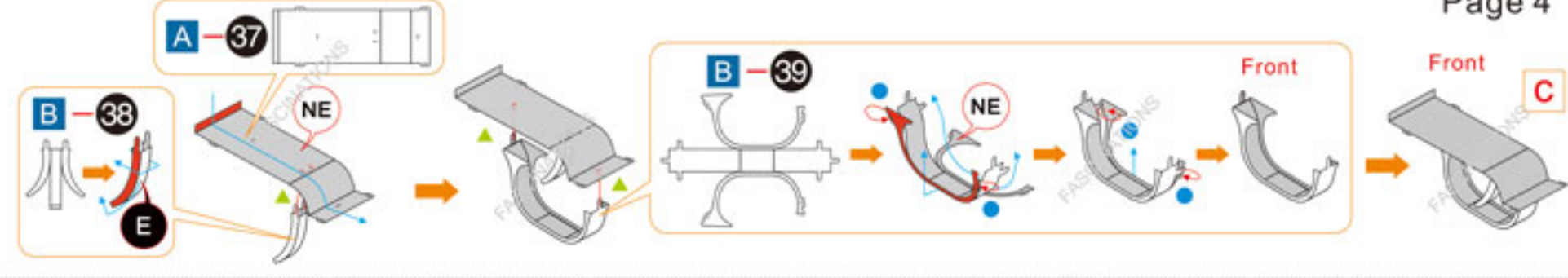




Bend part # 23 so that the texture is on its concave side



Bend the 4 tabs of part # 35 down 90 degrees before connecting them



Bend the tabs down 90 degrees before connecting them

Bend the tabs down 90 degrees before connecting them

