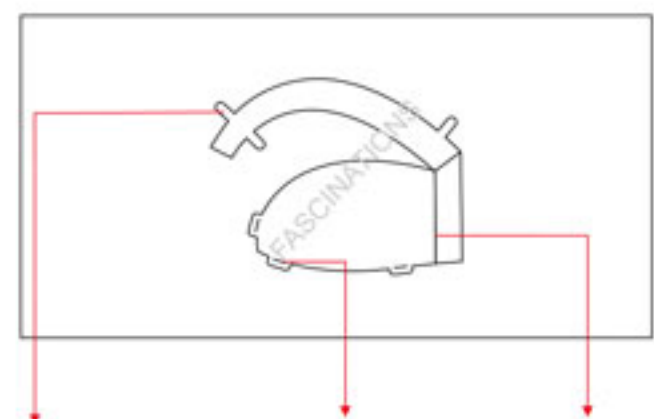




Darth Vader Helmet™  
Item No. MMS314



It is highly recommended that you visit [www.metalearth.com/360/mms314](http://www.metalearth.com/360/mms314) to see the completed model before assembling your own



Insertion tabs are inserted and then folded

Insertion holes

Fold lines can be seen as shown here

**Legends:**

- E** Engraved side
- NE** Non-engraved side
- P** Painted side
- Attention point
- Insert tab and bend 90 degrees
- Insert tab and twist 90 degrees

**Assembly tip:**

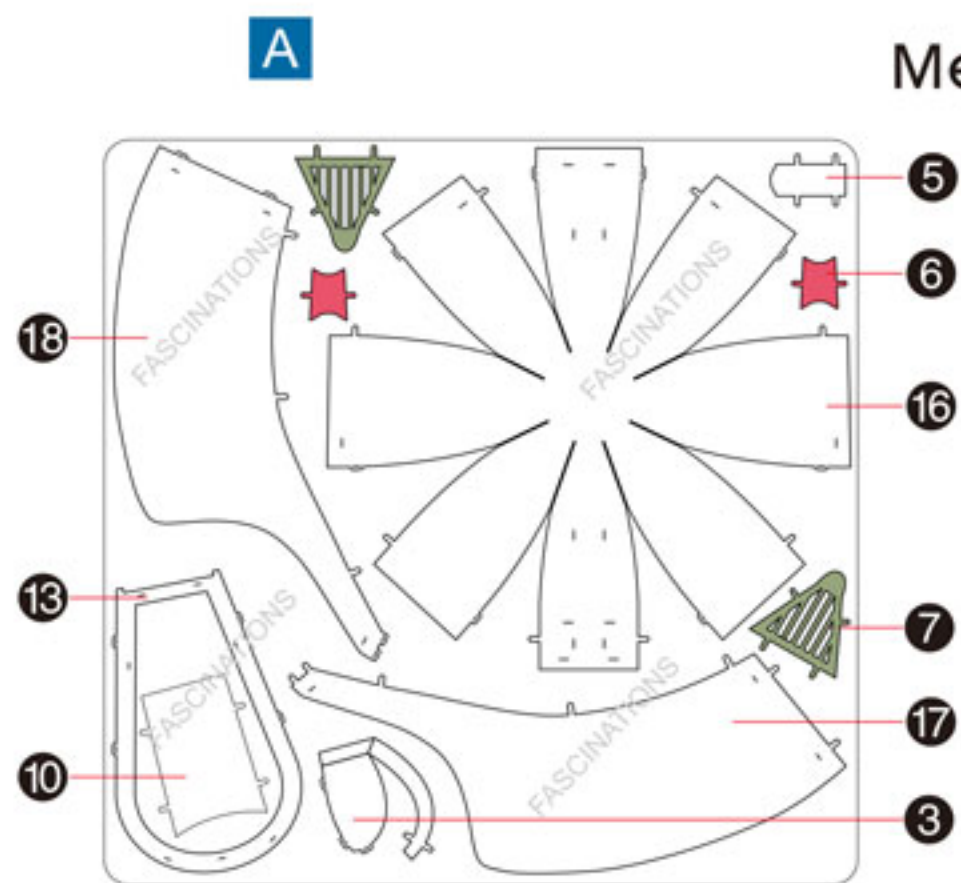
If needed, slightly twist tabs to hold parts together then untwist and bend them down for a nice finish

**Recommended tools:**

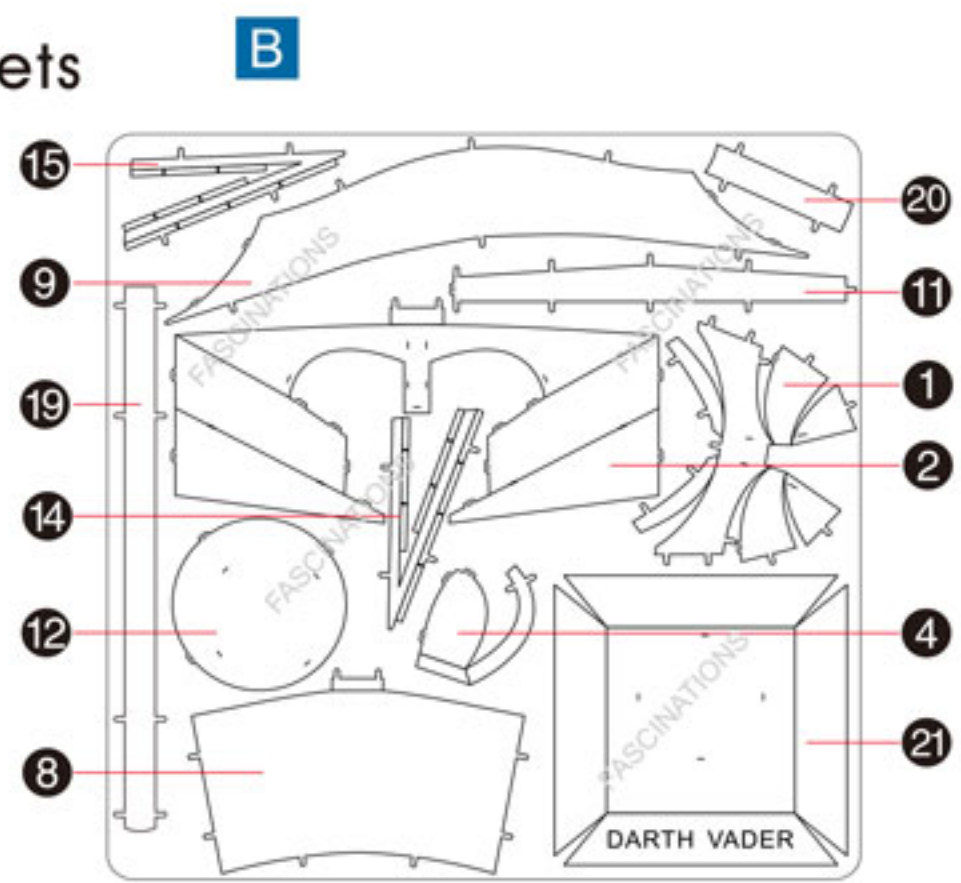
-Wire cutters: helpful for taking parts from the metal sheets.



-Tweezers or needle nose pliers: helpful for folding parts, bending and twisting tabs.

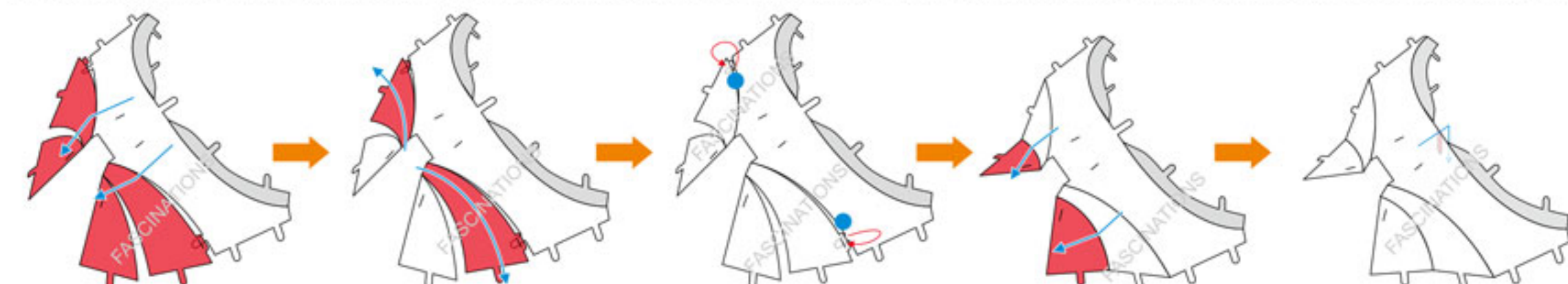
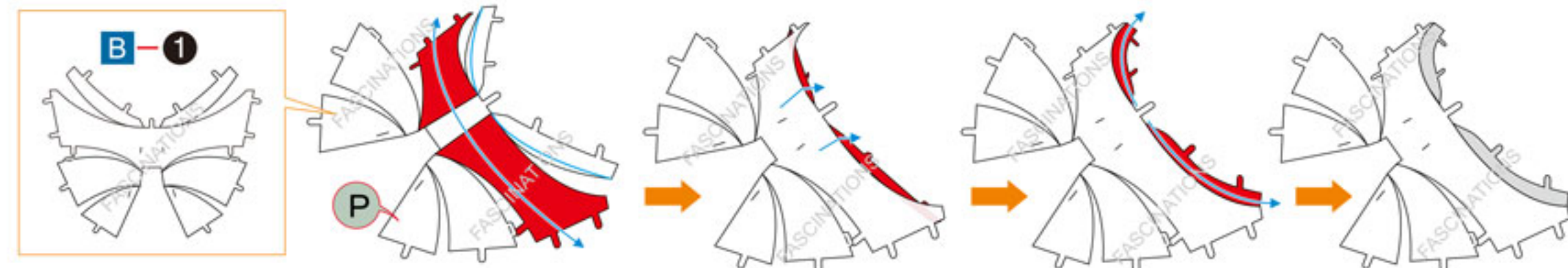


**Metal sheets**



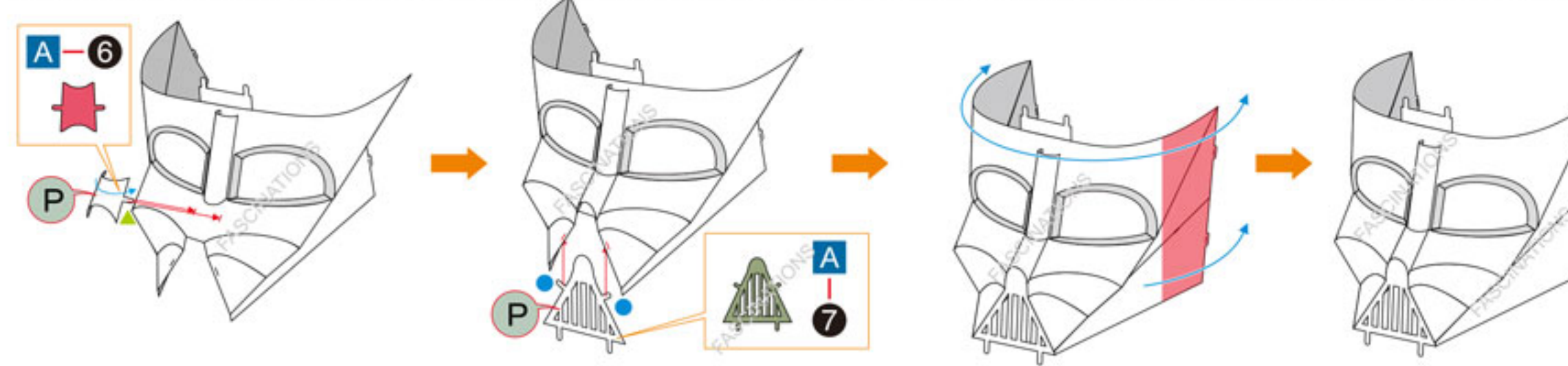
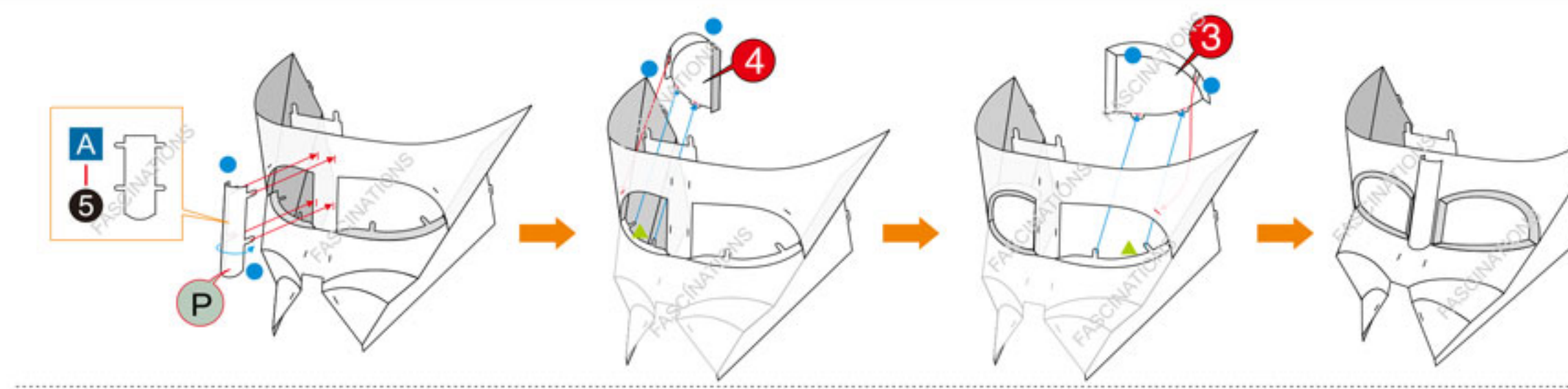
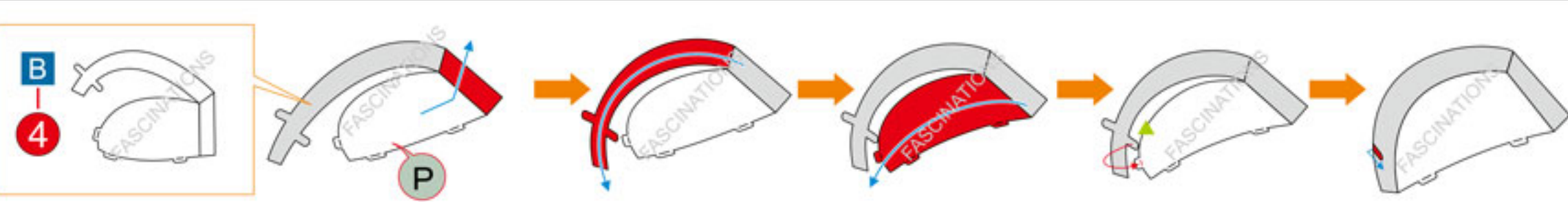
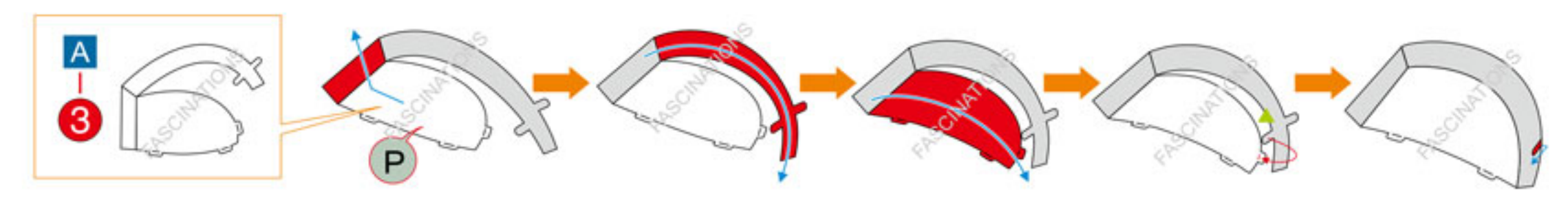
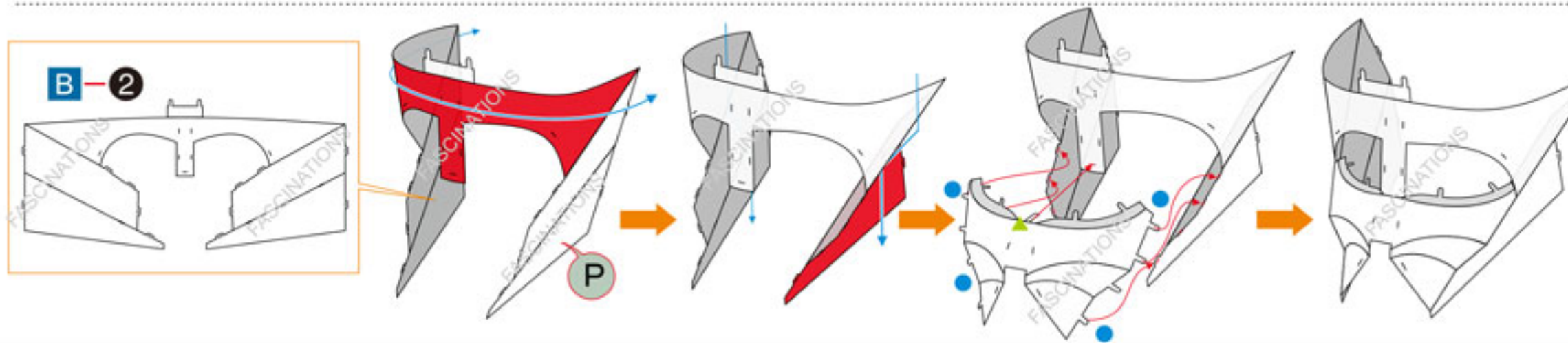
In order to avoid possible injury from sharp edges, please carefully discard the metal sheets after parts have been removed

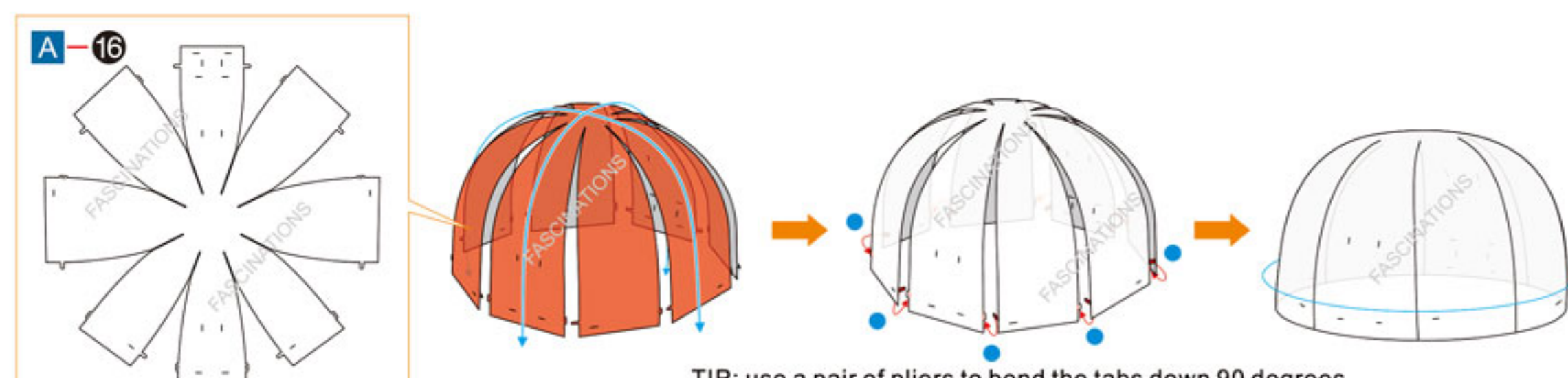
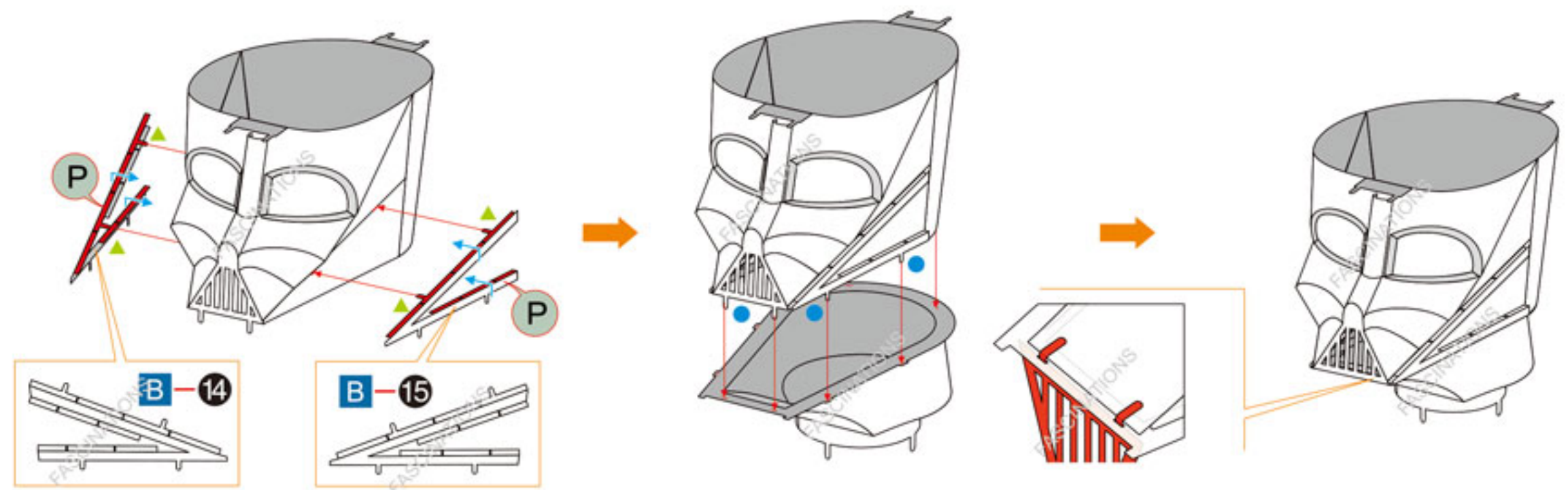
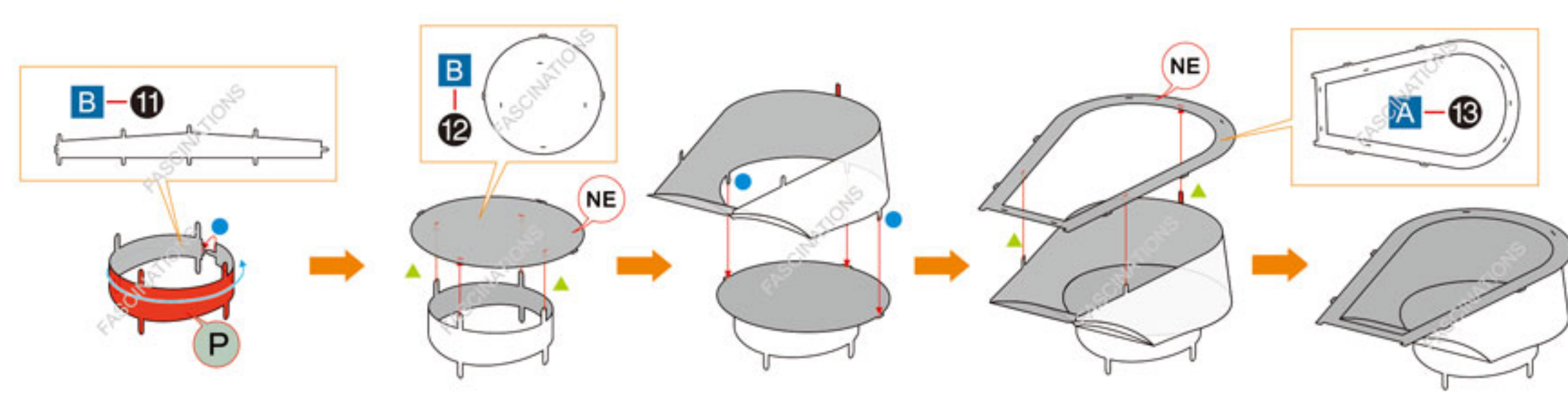
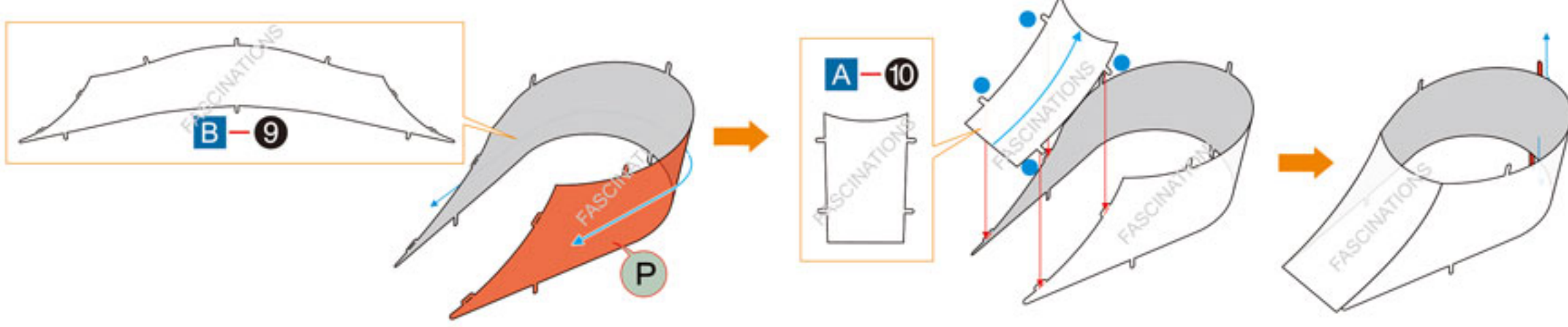
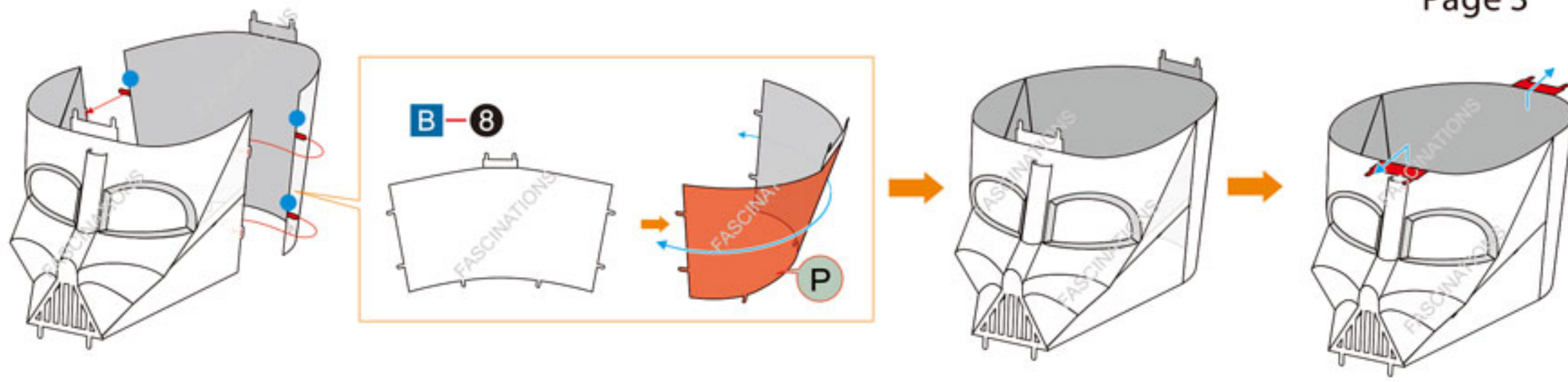
## Assembly Flow Chart



Bend red pieces down

Bend red pieces up





TIP: use a pair of pliers to bend the tabs down 90 degrees and the holes down 45 degrees before connecting them.

